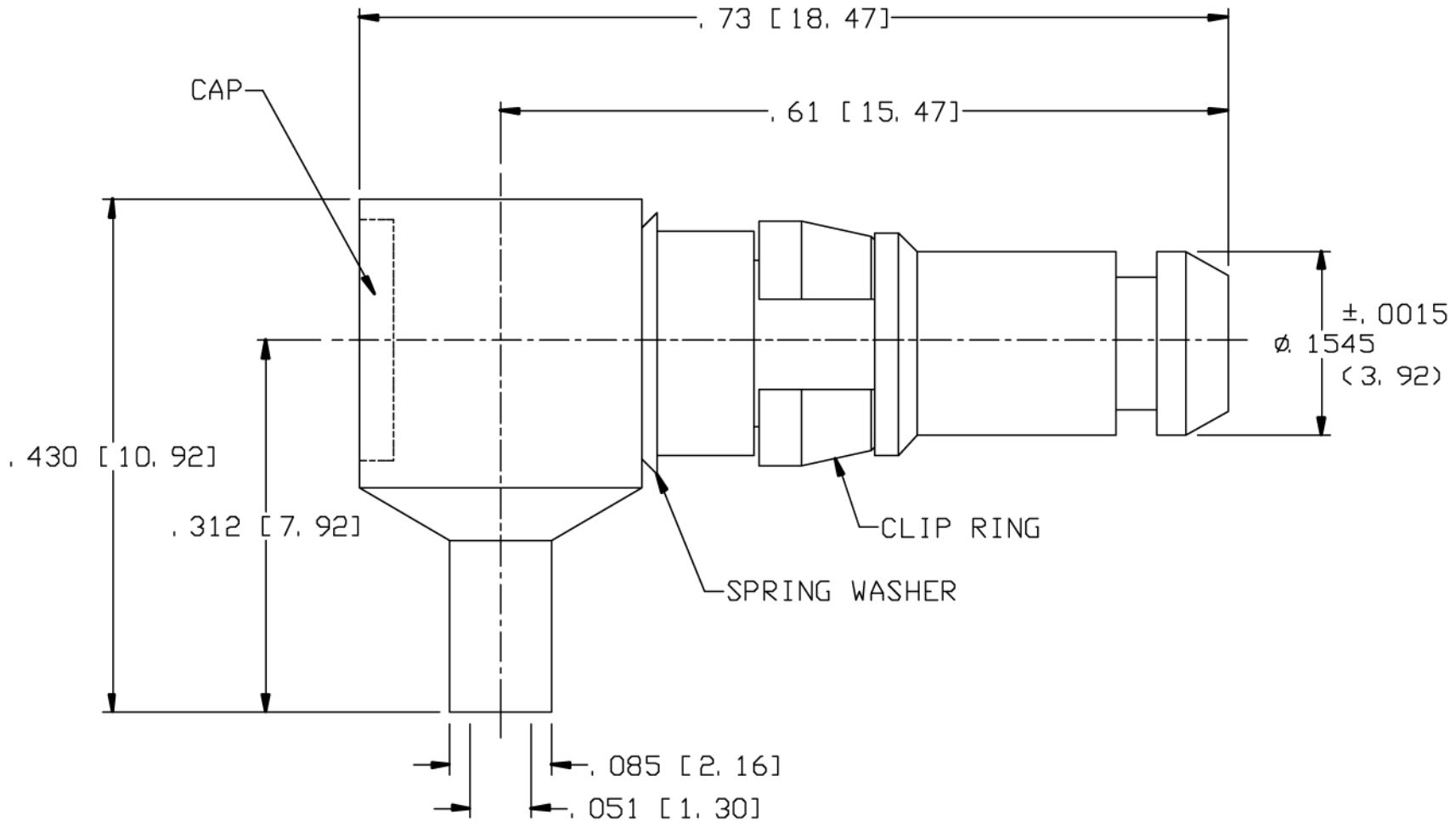
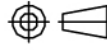


CAD DRAWING - NO MANUAL REVISIONS



				<p><b>PALCO CONNECTOR</b></p> <p>22 GREAT HILL RD., NAUGATUCK, CT 06770</p> <p>UNLESS OTHERWISE SPECIFIED, PALCO WORKMANSHIP STANDARDS APPLY</p> <p>TOLERANCES ON: DECIMALS: XX ± .01 .XXX ± .005 ANGLES ±1/8°</p> <p>DIMENSIONS IN INCHES OR (METRIC) DO NOT SCALE PRINTS</p>	<p>DRAWN MS</p>	<p>CHECKED JEM</p>	<p>ENGINEER YT</p>	<p>APPROVED JEM</p>	<p>FSCM 58167</p>
						<p>DESCRIPTION RIGHT ANGLE PKZ PLUG, (DIRECT SOLDER)</p>			
F	PER ECN 10501	08/05/10	JEM		<p>DATE 08/17/89</p>	<p>DRAWING NO. 26-0520-0470</p>	<p>PLATING OPT. A, B, C, D</p>		
REV.	DESCRIPTION	DATE	APPR.		NAT.	CATALOG ITEM			

THE INFORMATION IN THIS DOCUMENT IS CONFIDENTIAL AND PROPRIETARY AND MAY NOT BE USED FOR ANY PURPOSE WITHOUT THE WRITTEN CONSENT OF PALCO.

CABLE ASSEMBLY PROCEDURE	
P/N	26-0520-0470
PAGE 1 OF 1	DATE: 08/05/10
DRAWN: MS	APPROVED: JEM
FOR USE WITH M17/151 CABLE	

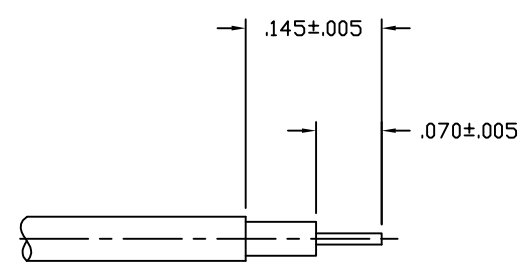
**PALEO**  
**CONNECTOR**

22 GREAT HILL ROAD, NAUGATUCK, CT. 06770  
PHONE: (203) 729-9090 FAX: (203) 723-1794

REV	DESCRIPTION	DATE	APPR
F	PER ECN 10501	08/05/10	JEM

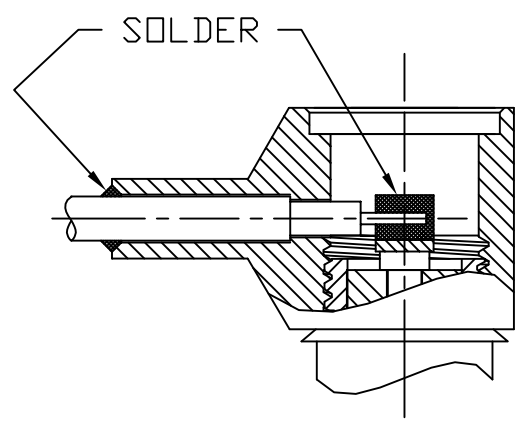
STEP 1

TRIM CABLE TO DIMENSIONS SHOWN.  
TIN CENTER CONDUCTOR.



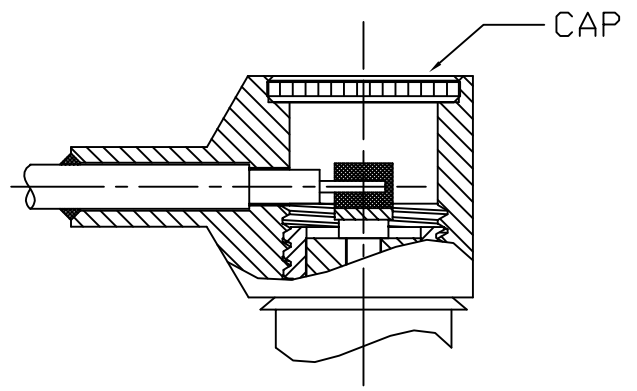
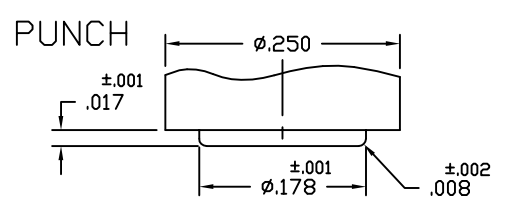
STEP 2

INSERT CABLE INTO BODY UNTIL CABLE BOTTOMS IN BODY. SOLDER CABLE JACKET INTO BODY, THEN SOLDER CENTER CONDUCTOR TO CENTER CONTACT OF CONNECTOR.



STEP 3

CLEAN AND INSPECT THE SOLDER JOINTS. FIXTURE BODY INTO A SMALL ARBOR PRESS, BEING CAREFUL NOT TO DAMAGE CONNECTOR AND PRESS CAP INTO BODY USING PUNCH MADE TO DIMENSIONS SHOWN.



INTERFACE DESIGN STANDARD		<b>PALEO</b> <b>CONNECTOR</b>	REV	DESCRIPTION	DATE	APPR
IDS-26			D	PER ECN 6752	10/24/02	HN
PAGE 1 OF 2	DATE: 02/28/94		E	PER ECN 7265	01/27/04	HN
DRAWN: JEM	APPROVED: HN	22 GREAT HILL ROAD, NAUGATUCK, CT. 06770 PHONE: (203) 729-9090 FAX: (203) 723-1794	F	PER ECN 9935	05/22/09	JEM
			G	PER ECN 10145	01/20/10	JEM

DESCRIPTION: 26 SERIES, SIZE 8 PkZ®

**MECHANICAL**

**MATERIALS**

BODIES:

PLUG BODIES - BRASS PER ASTM B 16.  
RECEPTACLE BODIES - BRASS PER ASTM B 16.

PLATING:

GOLD PER MIL-G-45204.  
COPPER PER MIL-C-14550.  
NICKEL PER QQ-N-290.

INSULATORS - VIRGIN TEFLON (PTFE) PER ASTM D 1710 AND ASTM D 1457.  
RETAINING RING - BERYLLIUM COPPER PER ASTM B 196.  
MALE CONTACT - BERYLLIUM COPPER PER ASTM B 197.  
FEMALE CONTACTS - BERYLLIUM COPPER PER ASTM B 197.  
WEATHER SEAL GASKET (OPTIONAL) - SILICONE RUBBER PER ZZ-R-765.  
EMI GASKET - BERYLLIUM COPPER ASTM B 196.

**FINISHES (ADD LETTER TO END OF PART NUMBER)**

"A" - .000050 MIN. GOLD OVER NICKEL  
"B" - .000030 MIN. GOLD OVER NICKEL  
"C" - .000050 MIN. GOLD OVER COPPER  
"D" - .000030 MIN. GOLD OVER COPPER

**MATING CHARACTERISTICS**

OUTER BODIES \_\_\_\_\_ 3 LBS MAX. INSERTION.  
2 OZ. MIN. WITHDRAWAL.  
CENTER CONTACTS \_\_\_\_\_ 32 OZ. MAX. INSERTION.  
.5 OZ. MIN. WITHDRAWAL.  
HOUSING RETENTION \_\_\_\_\_ 12 LBS. MIN.  
AXIAL MATING TOLERANCE \_\_\_\_\_ .090

**ELECTRICALS**

FREQUENCY RANGE: DC TO 32 GHz.  
VOLTAGE RATING STRAIGHT: 1000 VRMS.  
VOLTAGE RATING ANGLED: 800 VRMS.  
CURRENT RATING: 5 AMPS.  
INSULATION RESISTANCE: 2000 MEGOHMS MIN.  
INSERTION LOSS: .06  $\sqrt{f(\text{GHz})}$  dB

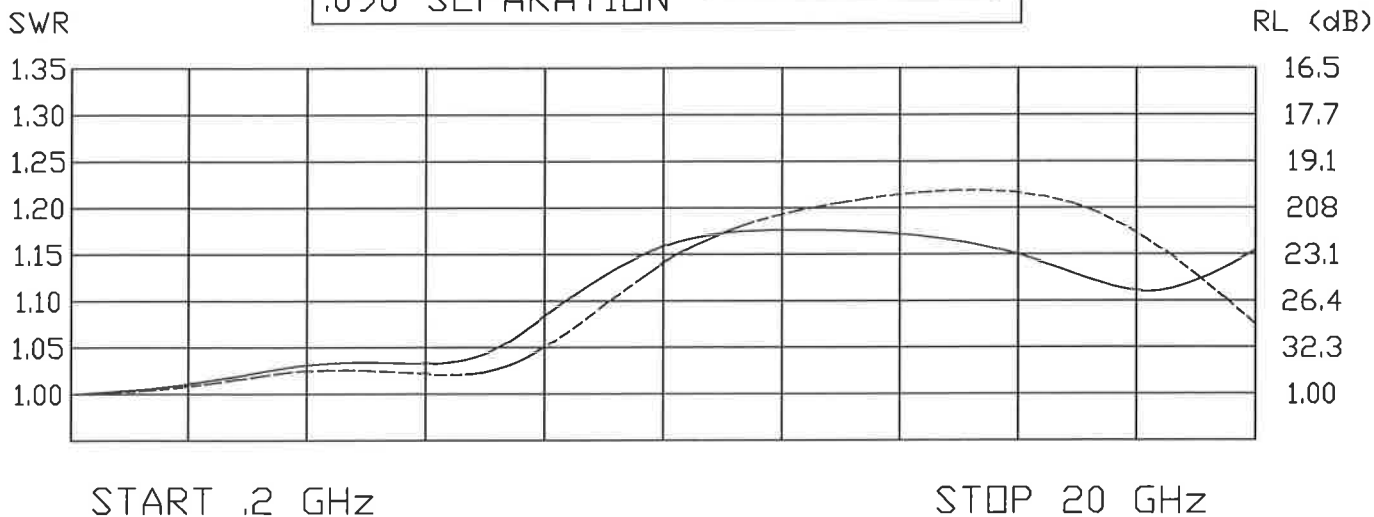
CONTACT RESISTANCE: CENTER CONTACT 5 MILLIOHMS  
CONTACT RESISTANCE: OUTER CONTACT 3 MILLIOHMS  
VSWR: 1.08 + .009(f) GHz., RG-402 CABLE.  
1.15 + .02 (f) GHz., RG-174 & RG-316 CABLES.  
1.15 + .01 (f) GHz., RG-142, 223, 303 & 400 CABLES.

**ENVIRONMENTAL**

OPERATING TEMPERATURE: -65°C to +165°C  
VIBRATION: MIL-STD-202, METHOD 204, TEST CONDITION D.  
SHOCK: MIL-STD-202, METHOD 213, TEST CONDITION I.  
SALT SPRAY: MIL-STD-1344, METHOD 1001, CONDITION B.  
DURABILITY: 500 CYCLES.

THERMAL SHOCK: MIL-STD-202, METHOD 107, TEST CONDITION B, EXCEPT HIGH TEMPERATURE SHALL BE +85°C.  
MOISTURE RESISTANCE: MIL-STD-202, METHOD 106.  
NO MEASUREMENT AT HIGH HUMIDITY. INSULATION RESISTANCE 2000 MEGOHMS AFTER HUMIDITY.

FULL MATING \_\_\_\_\_  
.090 SEPARATION \_\_\_\_\_



INTERFACE DESIGN STANDARD	
IDS-26	
PAGE 2 OF 2	DATE: 06/28/94
DRAWN: JEM	APPROVED: HN

**PALEO**  
**CONNECTOR**

22 GREAT HILL ROAD, NAUGATUCK, CT. 06770  
PHONE: (203) 729-9090 FAX: (203) 723-1794

REV	DESCRIPTION	DATE	APPR
D	PER ECN 6752	10/24/02	HN
E	PER ECN 7625	01/27/04	HN
F	PER ECN 9935	05/22/09	JEM
G	PER ECN 10145	01/20/10	JEM

DESCRIPTION: 26 SERIES, PKZ<sup>®</sup> SIZE 8

	INCH	[mm]	SUFFIX
A	.250	[6.35]	MIN.
B	$\phi$ $\frac{.153}{.156}$	$\frac{[3.89]}{[3.96]}$	
C	$\frac{.126}{.132}$	$\frac{[3.20]}{[3.35]}$	MIN.
D	$\phi$ .206	[5.23]	

PLUG

	INCH	[mm]	SUFFIX
A	.245	[6.22]	MIN.
B	$\frac{.143}{.147}$	$\frac{[3.63]}{[3.73]}$	
C	$\phi$ .206	[5.23]	
D	$\phi$ $\frac{.0395}{.0410}$	$\frac{[1.00]}{[1.04]}$	
E	$\phi$ .157	[3.99]	MIN.

RECEPTACLE