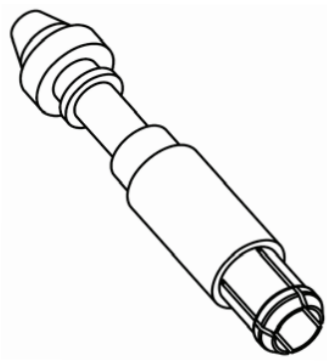
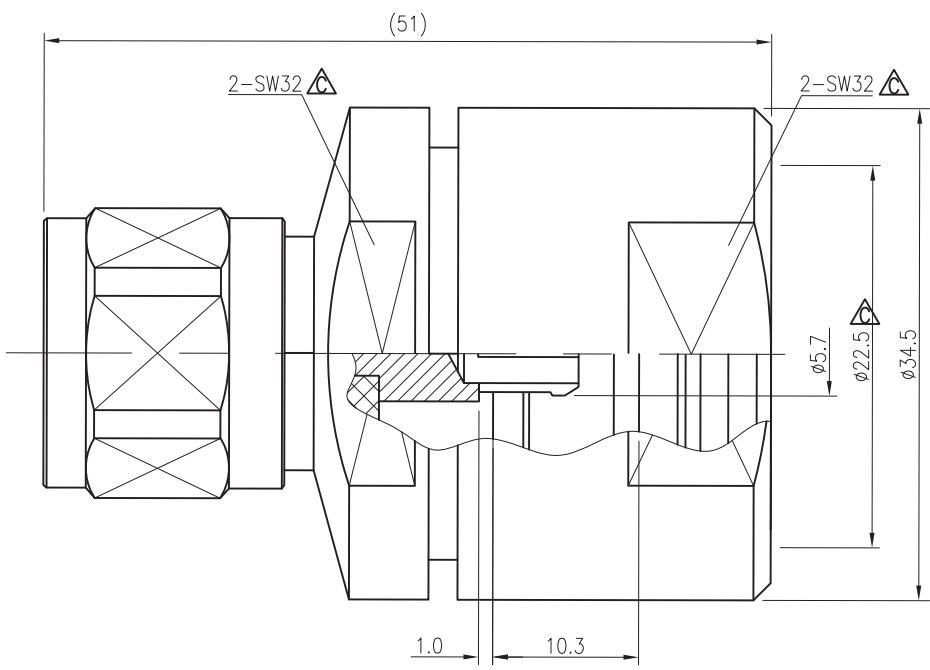


REV	DESCRIPTION	MM/DD/YY	ZONE
A	RELEASED	12/10/08	
B	ECR903026	12/10/08	
C		07/06/10	D3,D5,C3

CAD DRAWING – NO MANUAL REVISIONS



- NOTES:
- DESIGN AND INTERFACE PER I.D.S-550
  - FOR USE WITH LMR900 OR SIMILAR CABLE
  - ALL MATERIALS AND FINISHES MUST BE ROHS COMPLIANT & NON-MAGNETIC.
  - DUST CAP MUST BE INCLUDED.

THE SOCKET PART OF THE CENTER CONTACT CAPTIVATE THE CABLE CONDUCTOR.

THESE ITEM(S)/TECHNICAL DATA ARE CONTROLLED FOR EXPORT FROM THE UNITED STATES IN ACCORDANCE WITH THE US EXPORT ADMINISTRATION REGULATIONS (EAR). DIVERSION CONTRARY TO U.S. LAW PROHIBITED.


9	WASHER	BRASS		1
8	SLEEVE	BRASS		2
7	RETAINING RING	TIN BRONZE		1
6	GASKET	SILICONE RUBBER		3
5	COUPLING NUT	BRASS		1
4	NUT	BRASS		1
3	INSULATOR	PTFE		1
2	CENTER CONTACT	TIN BRONZE		1
1	BODY	BRASS		1
ITEM NO.	PART DESCRIPTION	MATERIAL		QTY



**SHANGHAI PHOENIX COMMUNICATION & TECHNOLOGY COMPANY LTD.**  
SHANGHAI, CHINA.

UNLESS OTHERWISE SPECIFIED, PHOENIX WORKMANSHIP STANDARDS APPLY

TOLERANCES ON: DECIMALS: X ±0.25 .XX ±0.12 ANGLES ±3°  
DIMENSIONS IN METRIC DO NOT SCALE PRINTS  
UNLESS OTHERWISE SPECIFIED DIMENSIONS ARE IN MILLIMETER

DESCRIPTION		
N STRAIGHT MALE FOR LMR 900;NON-MAGNETIC		
DRAWN: ZHANGWEILI	DWG NO.	PLT.OPT.
CHECKED: KGU	55005003601	S
APPROVED: MYE		SHEET 1 OF 1

INTERFACE DESIGN STANDARD	
IDS-550	
DATE: 02/08/03	
DRAWN: EK	APPROVED: HN

**PALEO**  
**CONNECTOR**

22 GREAT HILL ROAD, NAUGATUCK, CT. 06770  
PHONE: (203) 729-9090 FAX: (203) 723-1794

REV	DESCRIPTION	DATE	APPR
A	PER ECN 6986	02/28/03	HN

DESCRIPTION: N 550 SERIES

