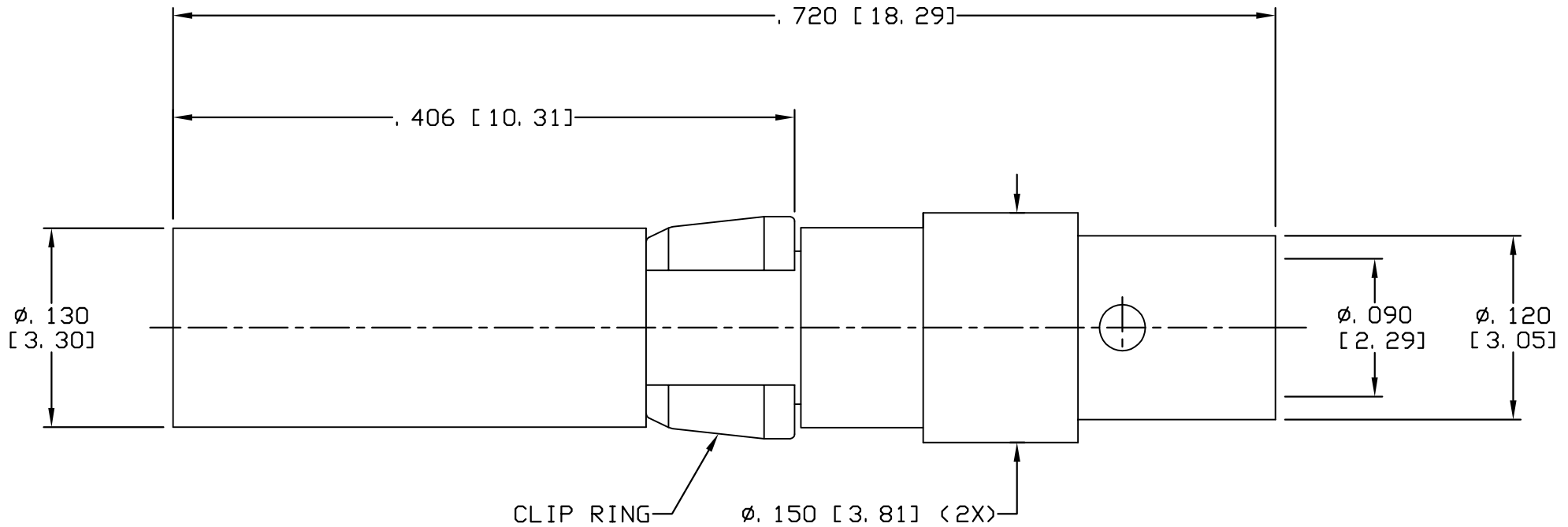


CAD DRAWING - NO MANUAL REVISIONS



NOTES:

1. DESIGN AND INTERFACE PER IDS-56A.
2. ACCOMMODATES RG-405 OR EQUIVALENT CABLES.
3. FOR USE IN BENDIX LRM OR SIZE 12 D-SUB HOUSINGS.
4. CONTACT AND SPACER SUPPLIED LOOSE.

D	PER ECN 11798	11/12/13	JEM	<b>PALCO CONNECTOR</b> 22 GREAT HILL RD., NAUGATUCK, CT 06770 UNLESS OTHERWISE SPECIFIED, PALCO WORKMANSHIP STANDARDS APPLY TOLERANCES ON: DECIMALS: XX ± .01 .XXX ± .005 ANGLES ±1/2° 32' DIMENSIONS IN INCHES OR (METRIC) DO NOT SCALE PRINTS	DRAWN JEM	CHECKED JEM	ENGINEER JEM	APPROVED JEM	FSCM 58167	
C	PER ECN 11735	07/22/13	JEM		DESCRIPTION SIZE 12 PKZ RECEPTACLE, DIRECT SOLDER		DATE 10/24/12			PLATING OPT. A, B, C, D
B	PER ECN 11651	04/22/13	JEM				DRAWING NO. 56-1202-0860			
A	PER ECN 11574	02/19/13	JEM		CATALOG ITEM					
01	PROTOTYPE	10/24/12	JEM							
REV.	DESCRIPTION	DATE	APPR.							

CABLE ASSEMBLY PROCEDURE

P/N 56-1202-0860

PAGE 1 OF 1 DATE: 02/19/13

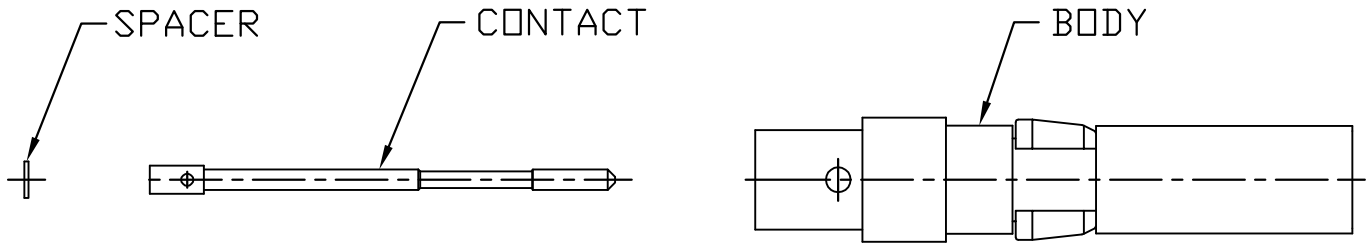
DRAWN: JEM APPROVED: JEM

FOR USE WITH RG-405 CABLE

**PALEO**  
**CONNECTOR**

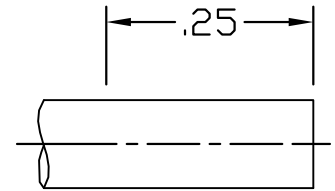
22 GREAT HILL ROAD, NAUGATUCK, CT. 06770  
PHONE: (203) 729-9090 FAX: (203) 723-1794

REV	DESCRIPTION	DATE	APPR
A	PER ECN 11574	02/19/13	JEM
B	PER ECN 11651	04/22/13	JEM
C	PER ECN 11735	07/22/13	JEM
D	PER ECN 11798	11/12/13	JEM



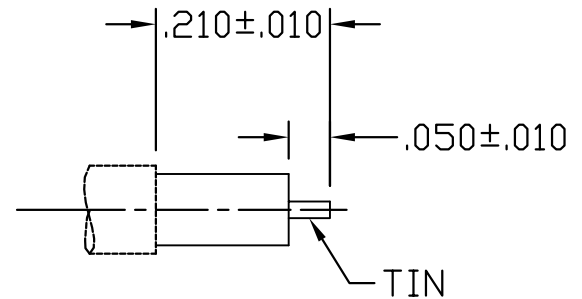
STEP 1

(FOR T-FLEX STYLE CABLES ONLY)  
DIP END OF CABLE INTO FLUX AND THEN TIP DIP CABLE TO DIMENSIONS SHOWN USING KESTER 63/37 SOLDER @ 500°F FOR SIX SECONDS MAX.



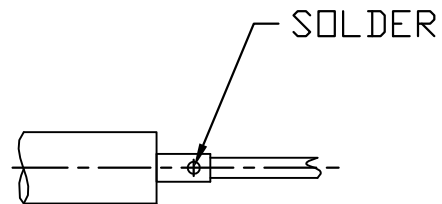
STEP 2

TRIM CABLE TO DIMENSIONS SHOWN. TIN CENTER CONDUCTOR. (.210±.010 DIMENSION FOR JACKETED CABLES ONLY) TIN CENTER CONDUCTOR.



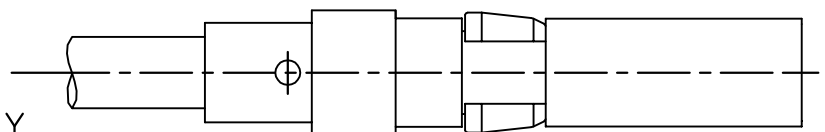
STEP 3

SLIDE CONTACT ONTO CENTER CONDUCTOR AS SHOWN. SOLDER CONTACT TO CENTER CONDUCTOR. CLEAN SOLDER JOINT.



STEP 4

INSERT ABOVE CABLE INTO CONNECTOR BODY UNTIL CABLE BOTTOMS. SOLDER BODY TO CABLE. CLEAN SOLDER JOINT.



4

3

2

1

SPECIFICATIONS:

1.) MATERIALS:  
 INSERTS: VALOX, TYPE GPT-30F, PER MIL-M-24519.  
 SHELLS: COLD ROLLED STEEL, PER ASTM A568 AND ASTM A620.

2.) FINISHES AND COLOR:  
 INSERT: BLACK.  
 SHELLS: RoHS COMPLIANT, HIGH RESISTANCE CLEAR CHROMATE OVER ZINC, PER ASTM B633, CLASS FE/ZN12 (.000500 MIN.), SERVICE CONDITION SC3, TYPE III.

3.) ELECTRICAL PROPERTIES:  
 DIELECTRIC STRENGTH:  
 500 TO 1,000 VOLTS RMS AT SEA LEVEL;  
 200 TO 325 VOLTS RMS AT 70,000 FEET.  
 INSULATION RESISTANCE: 1 MEGOHM MINIMUM.

4.) MECHANICAL PROPERTIES:  
 OPERATING TEMPERATURE: -67° F TO +257° F ( -55° C TO +125° C ).  
 SHOCK RESISTANCE: NO INTERRUPTION OF ELECTRICAL CONTINUITY LONGER THAN 1 MICROSECOND.  
 VIBRATION RESISTANCE: NO INTERRUPTION OF ELECTRICAL CONTINUITY LONGER THAN 1 MICROSECOND.

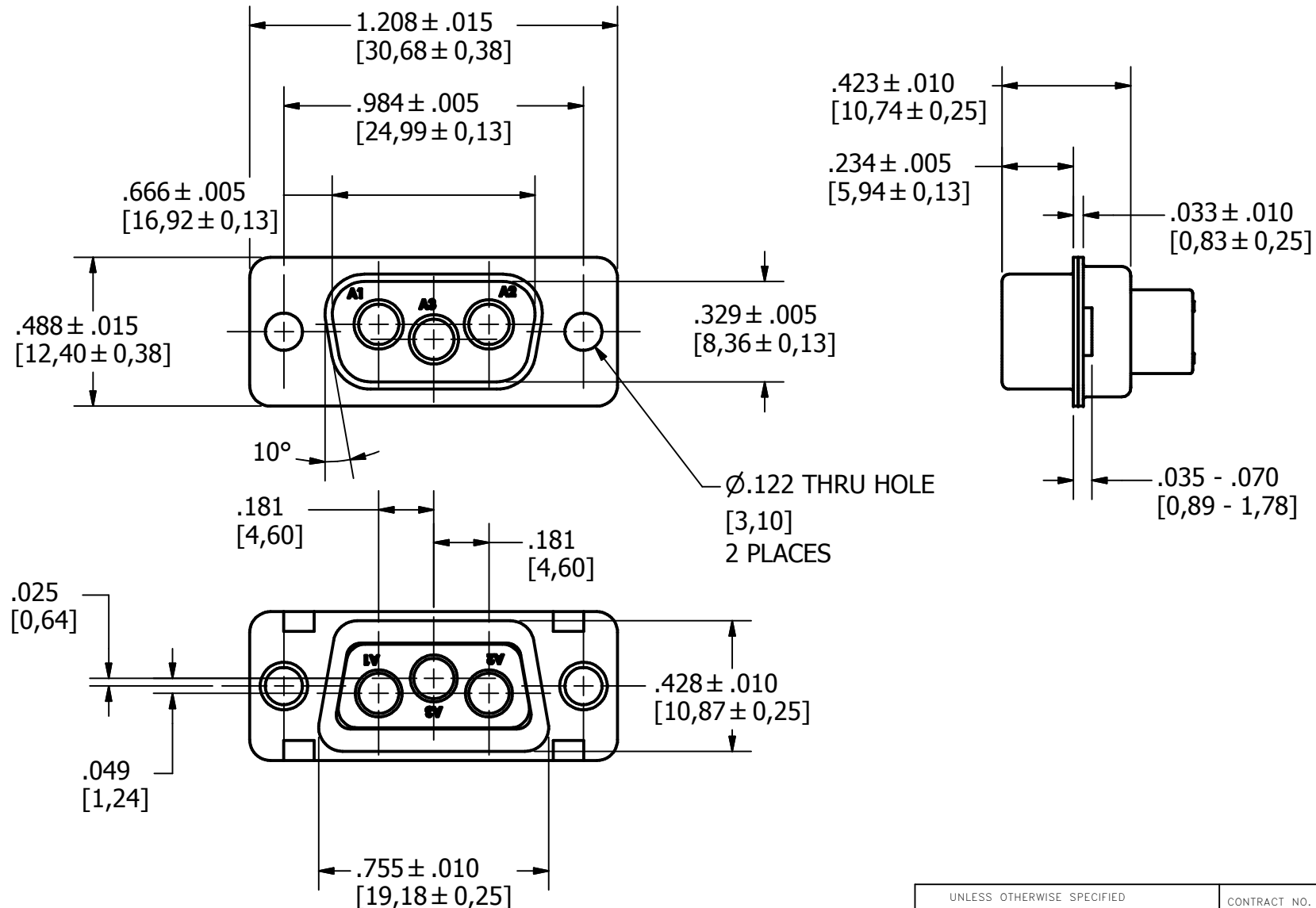
5.) DIMENSIONS ARE FOR REFERENCE ONLY, UNLESS OTHERWISE SPECIFIED.

6.) CONNECTOR MEETS REQUIREMENTS OF MIL-C-24308, LATEST REVISION.

7.) ABOVE REQUIREMENTS DO NOT INCLUDE PDM AND PKZ CONTACTS, PLEASE SEE INDIVIDUAL SPECIFICATION SHEETS.

8.) METRIC DIMENSIONS ARE SHOWN FOR REFERENCE, CONNECTORS ARE DESIGNED IN INCHES.

REV	DESCRIPTION	DATE	APPROVAL
A	ECN#11740 RELEASED FOR PRODUCTION	7/26/2013	



UNLESS OTHERWISE SPECIFIED  
 DIMENSIONS ARE IN INCHES  
 TOLERANCES ARE:  
 FRACTIONS DECIMALS ANGLES  
 $\pm 1/64$  .XX ± .01  $\pm 1/2^\circ$   
 .XXX ± .003

THE INFORMATION DISCLOSED IN  
 THIS DOCUMENT IS CONFIDENTIAL  
 AND PROPRIETARY TO PHOENIX CO.  
 INC. AND MAY NOT BE USED FOR  
 MANUFACTURE OR ANY OTHER  
 PURPOSE WITHOUT THE WRITTEN  
 CONSENT OF MIL-CON INC.

CONTRACT NO.	
APPROVALS	DATE
DRAWN R.M. Bradley	4/25/2013
CHECKED	
ISSUED	

The PHOENIX Company of Chicago™

**HD, D-SUB CONNECTOR, SIZE 12  
 PTRP3W35, PLUG, CLRCROM / ZINC**

SIZE B	FSCM NO. 60563	DWG. NO. PTRP3W35	REV. A
SCALE 2 X1		SHEET 1 OF 1	

4

3

2

1

SPECIFICATIONS:

1.) MATERIALS:  
 INSERTS: VALOX, TYPE GPT-30F, PER MIL-M-24519.  
 SHELLS: COLD ROLLED STEEL, PER ASTM A568 AND ASTM A620.

2.) FINISHES AND COLOR:  
 INSERT: BLACK.  
 SHELLS: RoHS COMPLIANT, HIGH RESISTANCE CLEAR CHROMATE OVER ZINC, PER ASTM B633, CLASS FE/ZN12 (.000500 MIN.), SERVICE CONDITION SC3, TYPE III.

3.) ELECTRICAL PROPERTIES:  
 DIELECTRIC STRENGTH:  
 500 TO 1,000 VOLTS RMS AT SEA LEVEL;  
 200 TO 325 VOLTS RMS AT 70,000 FEET.  
 INSULATION RESISTANCE: 1 MEGOHM MINIMUM.

4.) MECHANICAL PROPERTIES:  
 OPERATING TEMPERATURE: -67° F TO +257° F ( -55° C TO +125° C ).  
 SHOCK RESISTANCE: NO INTERRUPTION OF ELECTRICAL CONTINUITY LONGER THAN 1 MICROSECOND.  
 VIBRATION RESISTANCE: NO INTERRUPTION OF ELECTRICAL CONTINUITY LONGER THAN 1 MICROSECOND.

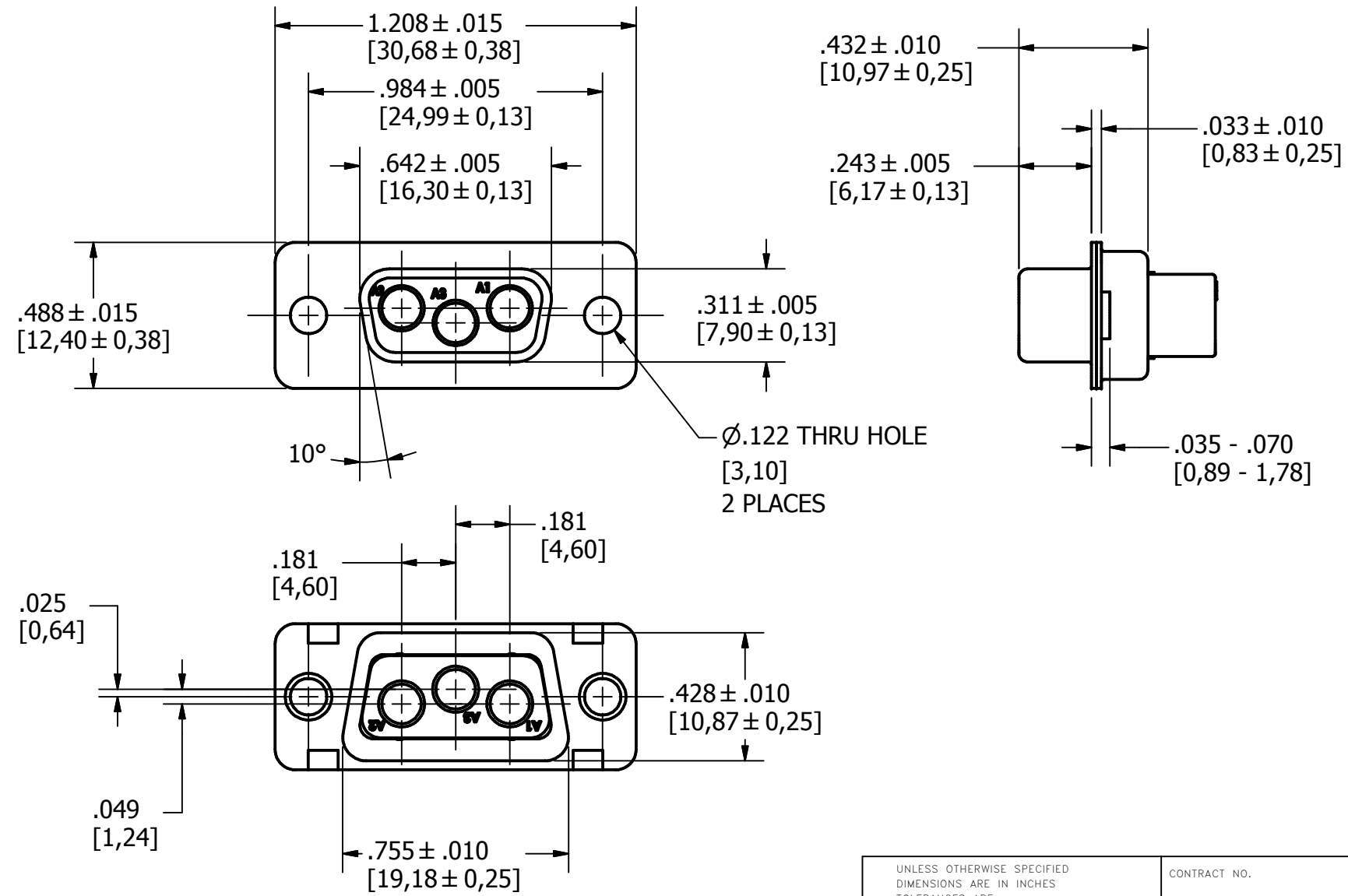
5.) DIMENSIONS ARE FOR REFERENCE ONLY, UNLESS OTHERWISE SPECIFIED.

6.) CONNECTOR MEETS REQUIREMENTS OF MIL-C-24308, LATEST REVISION.

7.) ABOVE REQUIREMENTS DO NOT INCLUDE PDM AND PKZ CONTACTS, PLEASE SEE INDIVIDUAL SPECIFICATION SHEETS.

8.) METRIC DIMENSIONS ARE SHOWN FOR REFERENCE, CONNECTORS ARE DESIGNED IN INCHES.

REV	DESCRIPTION	DATE	APPROVAL
A	ECN#11740 RELEASED FOR PRODUCTION	7/26/2013	



APPROVALS	DATE
R.M. Bradley	4/25/2013
CHECKED	
ISSUED	

UNLESS OTHERWISE SPECIFIED DIMENSIONS ARE IN INCHES TOLERANCES ARE: FRACTIONS DECIMALS ANGLES $\pm 1/64$ .XX ± .01 $\pm 1/2^\circ$ .XXX ± .003	CONTRACT NO.
THE INFORMATION DISCLOSED IN THIS DOCUMENT IS CONFIDENTIAL AND PROPRIETARY TO PHOENIX CO. INC. AND MAY NOT BE USED FOR MANUFACTURE OR ANY OTHER PURPOSE WITHOUT THE WRITTEN CONSENT OF MIL-CON INC.	APPROVALS
DO NOT SCALE DRAWING	DATE

<i>The PHOENIX Company of Chicago™</i>			
<b>HD, D-SUB CONNECTOR, SIZE 12 PTRR3W35, RECEPTACLE, CLRCROM / ZINC</b>			
SIZE	FSCM NO.	DWG. NO.	REV.
B	60563	PTRR3W35	A
SCALE	2 X 1		SHEET 1 OF 1

**SPECIFICATIONS:**

1.) MATERIALS:  
 INSERTS: VALOX, TYPE GPT-30F, PER MIL-M-24519.  
 SHELLS: COLD ROLLED STEEL, PER ASTM A568 AND ASTM A620.

2.) FINISHES AND COLOR:  
 INSERT: BLACK.  
 SHELLS: RoHS COMPLIANT, HIGH RESISTANCE CLEAR CHROMATE OVER ZINC, PER ASTM B633, CLASS FE/ZN12 (.000500 MIN.), SERVICE CONDITION SC3, TYPE III.

3.) ELECTRICAL PROPERTIES:  
 DIELECTRIC STRENGTH:  
 500 TO 1,000 VOLTS RMS AT SEA LEVEL;  
 200 TO 325 VOLTS RMS AT 70,000 FEET.  
 INSULATION RESISTANCE: 1 MEGOHM MINIMUM.

4.) MECHANICAL PROPERTIES:  
 OPERATING TEMPERATURE: -67° F TO +257° F (-55° C TO +125° C).  
 SHOCK RESISTANCE: NO INTERRUPTION OF ELECTRICAL CONTINUITY LONGER THAN 1 MICROSECOND.  
 VIBRATION RESISTANCE: NO INTERRUPTION OF ELECTRICAL CONTINUITY LONGER THAN 1 MICROSECOND.

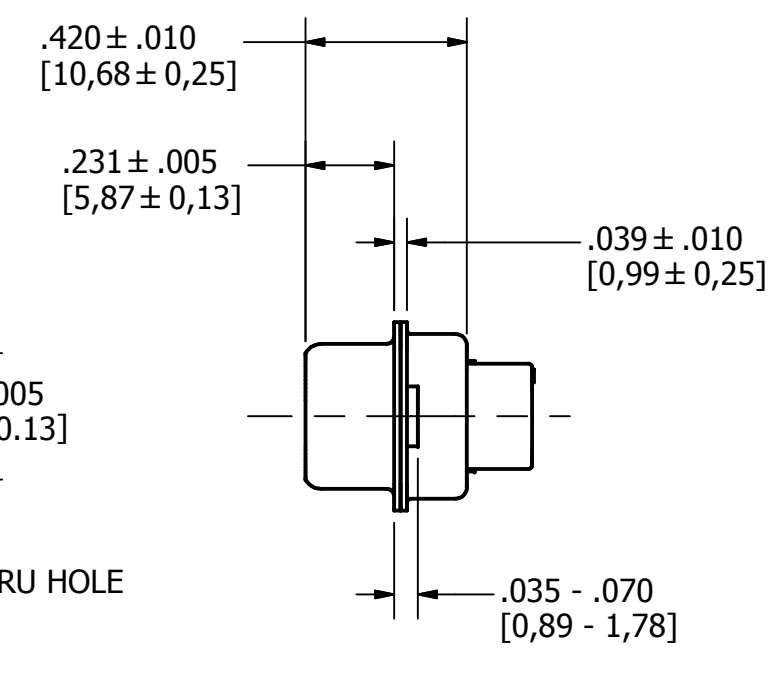
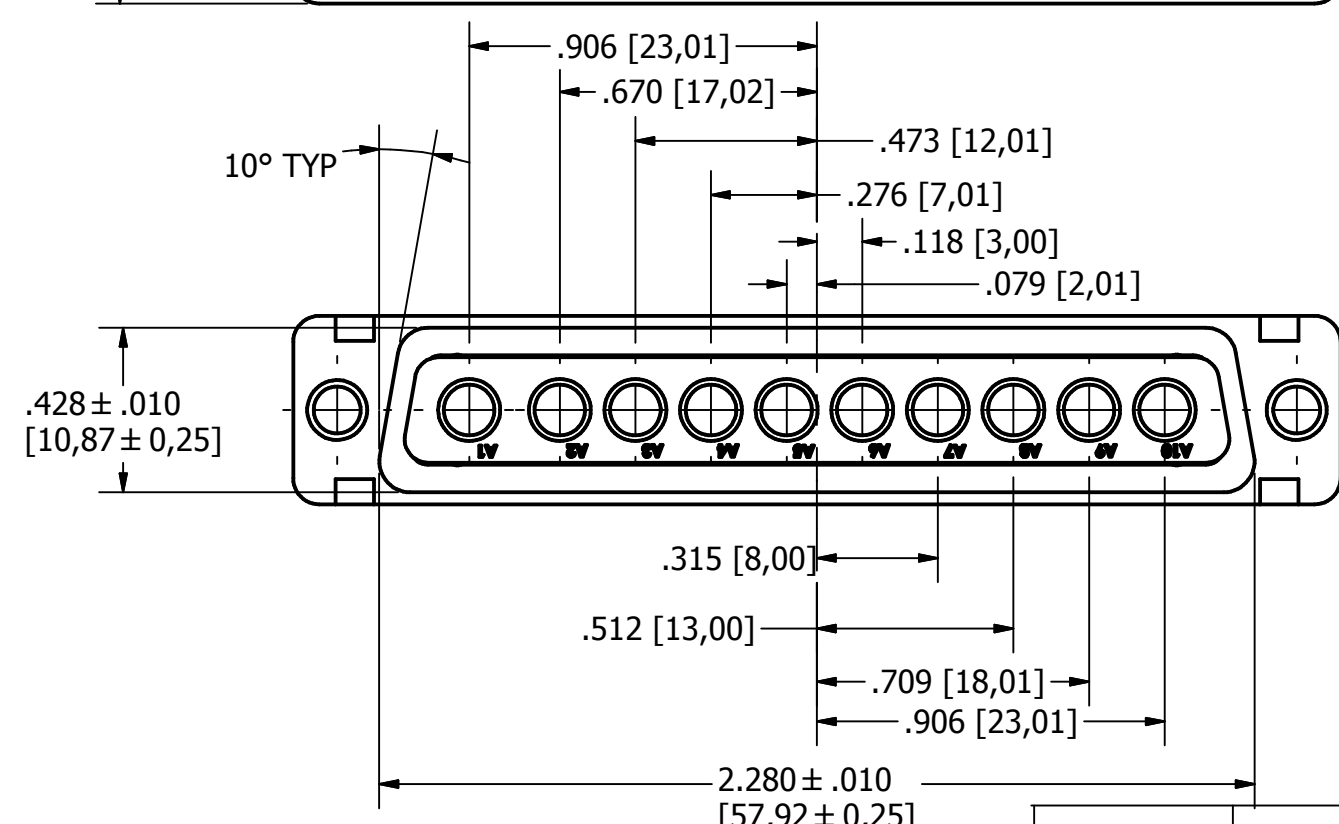
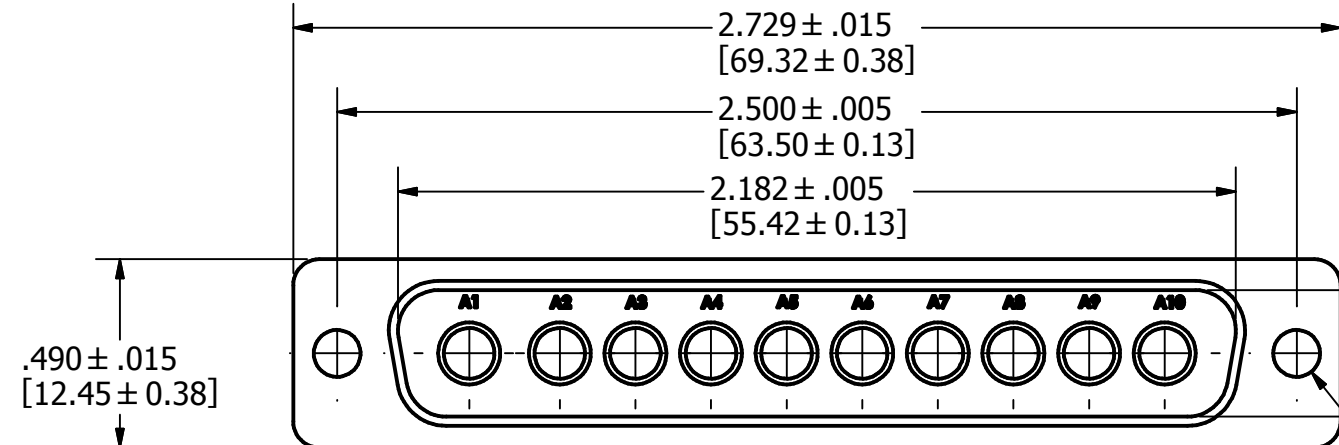
5.) DIMENSIONS ARE FOR REFERENCE ONLY, UNLESS OTHERWISE SPECIFIED.

6.) CONNECTOR MEETS REQUIREMENTS OF MIL-C-24308, LATEST REVISION.

7.) ABOVE REQUIREMENTS DO NOT INCLUDE PDM AND PKZ CONTACTS, PLEASE SEE INDIVIDUAL SPECIFICATION SHEETS.

8.) METRIC DIMENSIONS ARE SHOWN FOR REFERENCE, CONNECTORS ARE DESIGNED IN INCHES.

REV	DESCRIPTION	DATE	APPROVAL
A	ECN#11740 RELEASED FOR PRODUCTION	7/26/2013	



UNLESS OTHERWISE SPECIFIED DIMENSIONS ARE IN INCHES TOLERANCES ARE: FRACTIONS DECIMALS ANGLES $\pm 1/64$ .XX ± .01 $\pm 1/2^\circ$ .XXX ± .003		CONTRACT NO.		<i>The PHOENIX Company of Chicago™</i>			
THE INFORMATION DISCLOSED IN THIS DOCUMENT IS CONFIDENTIAL AND PROPRIETARY TO PHOENIX CO. INC. AND MAY NOT BE USED FOR MANUFACTURE OR ANY OTHER PURPOSE WITHOUT THE WRITTEN CONSENT OF MIL-CON INC.		APPROVALS	DATE				
NEXT ASSEMBLY	USED ON	DRAWN R.M. Bradley	4/16/2013	SIZE B	FSCM NO. 60563	DWG. NO. PTRP10W105	
APPLICATIONS		DO NOT SCALE DRAWING		SCALE	2 X 1	SHEET 1 OF 1	



SPECIFICATIONS:  
 1.) MATERIALS:  
 INSERTS: VALOX, TYPE GPT-30F, PER MIL-M-24519.  
 SHELLS: COLD ROLLED STEEL, PER ASTM A568 AND ASTM A620.

2.) FINISHES AND COLOR:  
 INSERT: BLACK.  
 SHELLS: RoHS COMPLIANT, HIGH RESISTANCE CLEAR CHROMATE OVER ZINC, PER ASTM B633, CLASS FE/ZN12 (.000500 MIN.), SERVICE CONDITION SC3, TYPE III.

3.) ELECTRICAL PROPERTIES:  
 DIELECTRIC STRENGTH:  
 500 TO 1,000 VOLTS RMS AT SEA LEVEL;  
 200 TO 325 VOLTS RMS AT 70,000 FEET.  
 INSULATION RESISTANCE: 1 MEGOHM MINIMUM.

4.) MECHANICAL PROPERTIES:  
 OPERATING TEMPERATURE: -67° F TO +257° F ( -55° C TO +125° C ).  
 SHOCK RESISTANCE: NO INTERRUPTION OF ELECTRICAL CONTINUITY LONGER THAN 1 MICROSECOND.  
 VIBRATION RESISTANCE: NO INTERRUPTION OF ELECTRICAL CONTINUITY LONGER THAN 1 MICROSECOND.

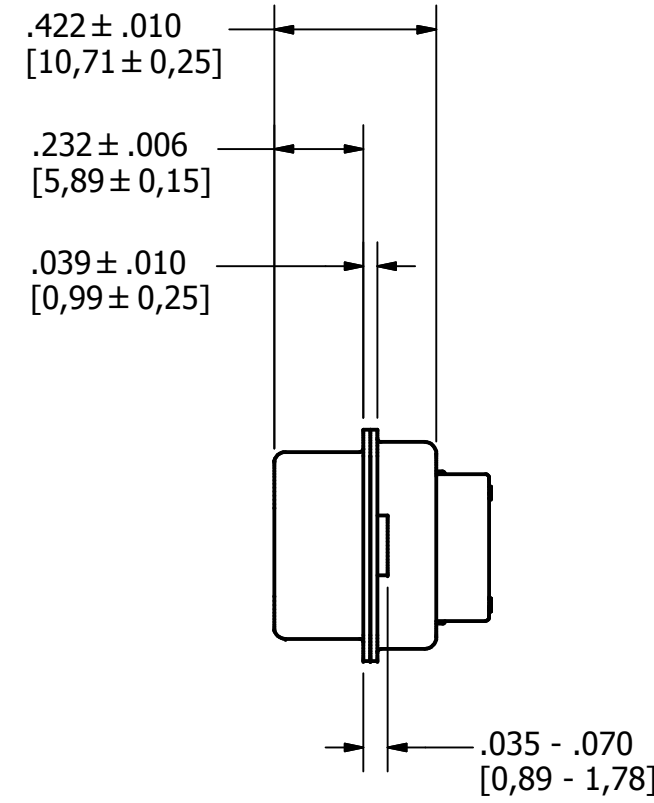
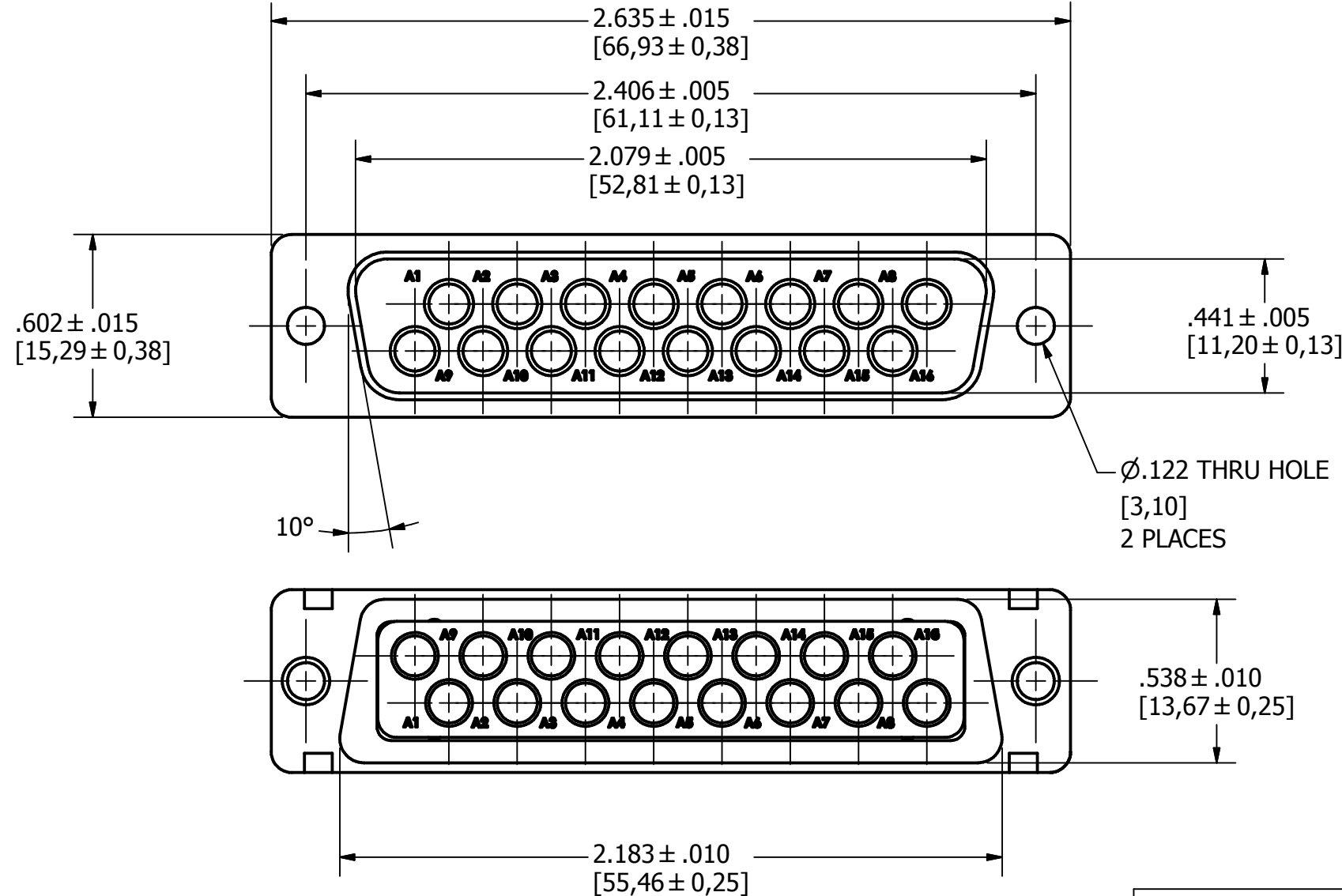
5.) DIMENSIONS ARE FOR REFERENCE ONLY, UNLESS OTHERWISE SPECIFIED.

6.) CONNECTOR MEETS REQUIREMENTS OF MIL-C-24308, LATEST REVISION.

7.) ABOVE REQUIREMENTS DO NOT INCLUDE PDM AND PKZ CONTACTS, PLEASE SEE INDIVIDUAL SPECIFICATION SHEETS.

8.) METRIC DIMENSIONS ARE SHOWN FOR REFERENCE, CONNECTORS ARE DESIGNED IN INCHES.

REV	DESCRIPTION	DATE	APPROVAL
A	ECN#11740 RELEASED FOR PRODUCTION	7/26/2013	



UNLESS OTHERWISE SPECIFIED  
 DIMENSIONS ARE IN INCHES  
 TOLERANCES ARE:  
 FRACTIONS DECIMALS ANGLES  
 ± 1/64 .XX ± .01 ± 1/2°  
 .XXX ± .003

THE INFORMATION DISCLOSED IN  
 THIS DOCUMENT IS CONFIDENTIAL  
 AND PROPRIETARY TO PHOENIX CO.  
 INC. AND MAY NOT BE USED FOR  
 MANUFACTURE OR ANY OTHER  
 PURPOSE WITHOUT THE WRITTEN  
 CONSENT OF MIL-CON INC.

NEXT ASSEMBLY	USED ON
APPLICATIONS	

DO NOT SCALE DRAWING

CONTRACT NO.	
APPROVALS	DATE
DRAWN R.M. Bradley	4/19/2013
CHECKED	
ISSUED	

The **PHOENIX** Company of Chicago™

**HD, D-SUB CONNECTOR, SIZE 12  
 PTRP16W165, PLUG, CLRCROM / ZINC**

SIZE B	FSCM NO. 60563	DWG. NO. PTRP16W165	REV. A
SCALE 2 X 1		SHEET 1 OF 1	

