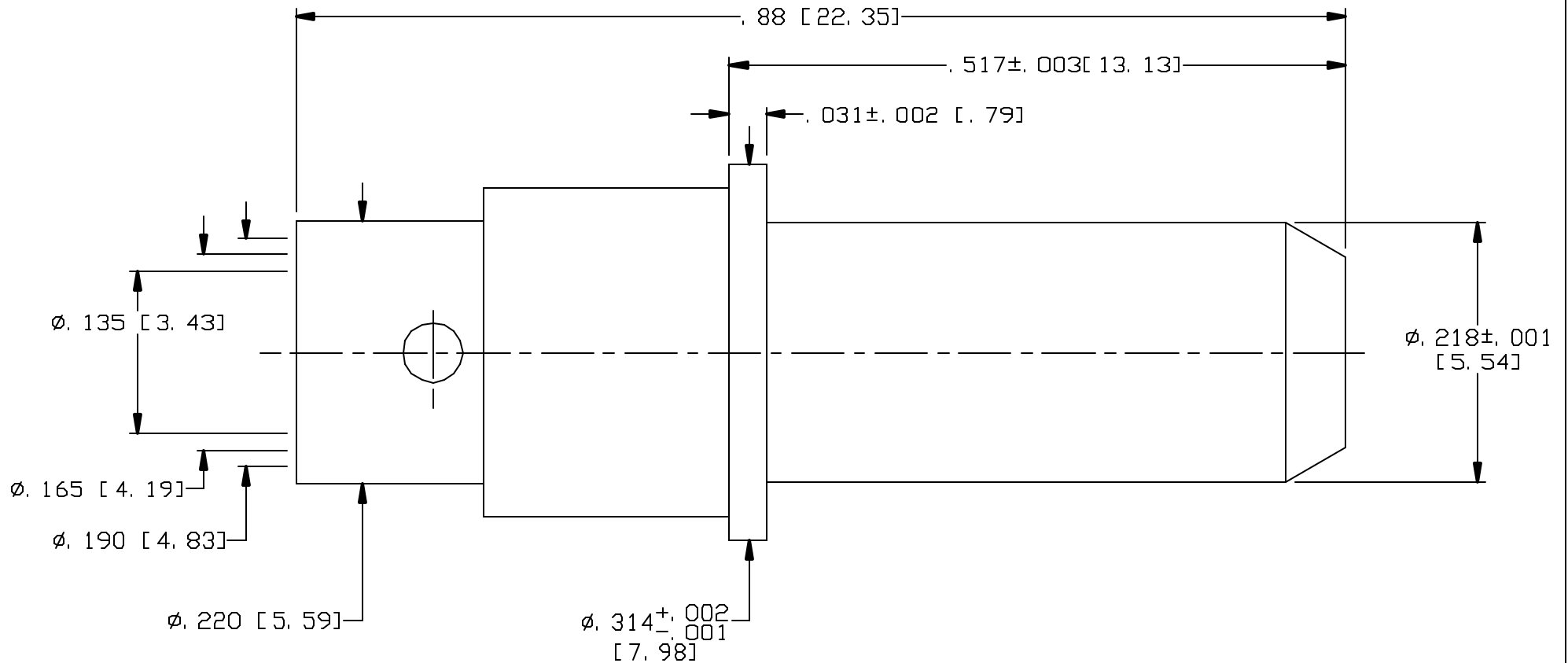
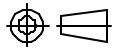



CAD DRAWING - NO MANUAL REVISIONS

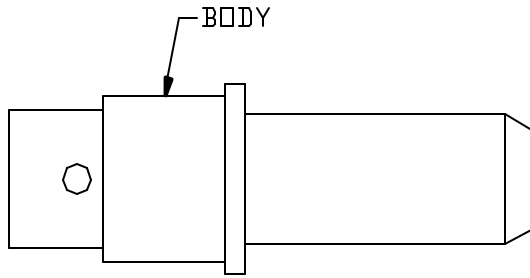


NOTES:

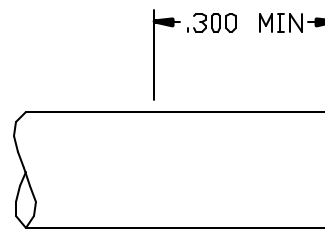
1. DESIGN AND INTERFACE PER I. D. S. -78.
2. DESIGN TO FIT MIL-C-38999, SERIES I-IV HOUSINGS.
3. ACCOMMODATES TIMES MICROWAVE SFT-142B OR EQUIVALENT CABLE.

				<p>PALCO CONNECTOR</p> <p>22 GREAT HILL RD., NAUGATUCK, CT 06770</p> <p>UNLESS OTHERWISE SPECIFIED, PALCO WORKMANSHIP STANDARDS APPLY</p> <p>TOLERANCES ON: DECIMALS: XX ±.01 .XXX ±.005 ANGLES ±1/2° 32'</p> <p>DIMENSIONS IN INCHES OR (METRIC) DO NOT SCALE PRINTS</p>	<p>DRAWN MS</p>	<p>CHECKED JEM</p>	<p>ENGINEER MS</p>	<p>APPROVED JEM</p>	<p>FSCM 58167</p>
						<p>DESCRIPTION PKZ PLUG DIRECT SOLDER</p>			
01	PRELIMINARY	08/03/10	JEM		<p>DATE 08/03/10</p>	<p>DRAWING NO. 78-0020-2202</p>	<p>PLATING OPT. A, B, C, D</p>		
REV.	DESCRIPTION	DATE	APPR.		EPR 9832 J				

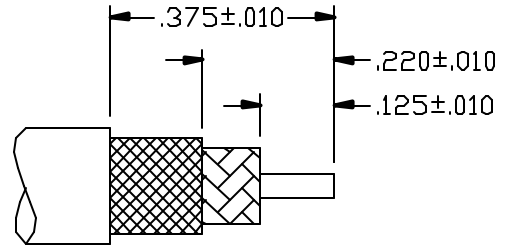
CABLE ASSEMBLY PROCEDURE			REV	DESCRIPTION	DATE	APPR
P/N 78-0020-2202			01	PRELIMINARY	08/03/10	JEM
PAGE 1 OF 1	DATE: 08/03/10					
DRAWN: MS	APPROVED: JEM					
FOR USE WITH TIMES SFT-142B CABLE		22 GREAT HILL ROAD, NAUGATUCK, CT. 06770		PHONE: (203) 729-9090 FAX: (203) 723-1794		



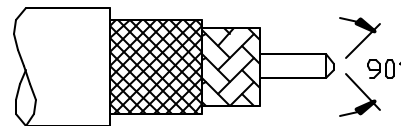
STEP 1
FLUX AND TIN DIP TO DIMENSION SHOWN.



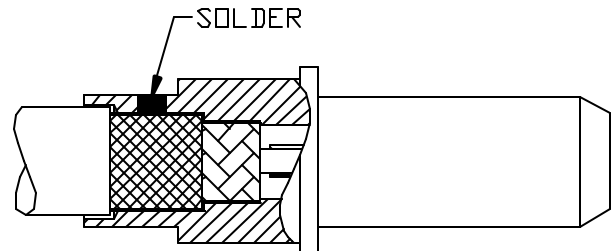
STEP 2
TRIM CABLE TO DIMENSIONS SHOWN




STEP 3
CHAMFER CENTER CONDUCTOR



STEP 4
INSERT CABLE INTO BACK OF BODY AND SOLDER BRAIDS TO CONNECTOR THROUGH SIDE HOLE AND CLEAN SOLDER JOINT.



INTERFACE DESIGN STANDARD			REV	DESCRIPTION	DATE	APPR
IDS-78			B	PER ECN 5123	06/29/99	HN
PAGE 1 OF 2	DATE: 06/16/98		C	PER ECN 9935	05/22/09	JEM
DRAWN: JEM	APPROVED: HN		D	PER ECN 10145	01/20/10	JEM
		22 GREAT HILL ROAD, NAUGATUCK, CT. 06770				
		PHONE: (203) 729-9090 FAX: (203) 723-1794				

DESCRIPTION: 78 SERIES, SIZE 8 PKZ[®] , FOR MIL-C-38999

MECHANICAL

MATERIALS

BODIES:

PLUG BODIES - BRASS PER ASTM B 16.
RECEPTACLE BODIES - BRASS PER ASTM B 16.

INSULATORS - TEFLON (PTFE) PER ASTM D 1457.
RETAINING RING - BERYLLIUM COPPER PER ASTM B 196.
MALE CONTACT - BERYLLIUM COPPER PER ASTM B 197.
FEMALE CONTACTS - BERYLLIUM COPPER PER ASTM B 197.
GROUNDING RING - BERYLLIUM COPPER PER ASTM B 196.

PLATING:

GOLDE PER MIL-G-45204.
COPPER PER MIL-C-14550.
NICKEL PER QQ-N-290.

FINISHES (ADD LETTER TO END OF PART NUMBER)

"A" - .000050 MIN. GOLD OVER NICKEL
"B" - .000030 MIN. GOLD OVER NICKEL
"C" - .000050 MIN. GOLD OVER COPPER
"D" - .000030 MIN. GOLD OVER COPPER

MATING CHARACTERISTICS

OUTER BODIES _____ 3 LBS MAX. INSERTION.
2 OZ. MIN. WITHDRAWL.
CENTER CONTACTS _____ 32 OZ. MAX. INSERTION.
.5 OZ. MIN. WITHDRAWL.
HOUSING RETENTION _____ 12 LBS. MIN.
AXIAL MATING TOLERANCE _____ .090

ELECTRICALS

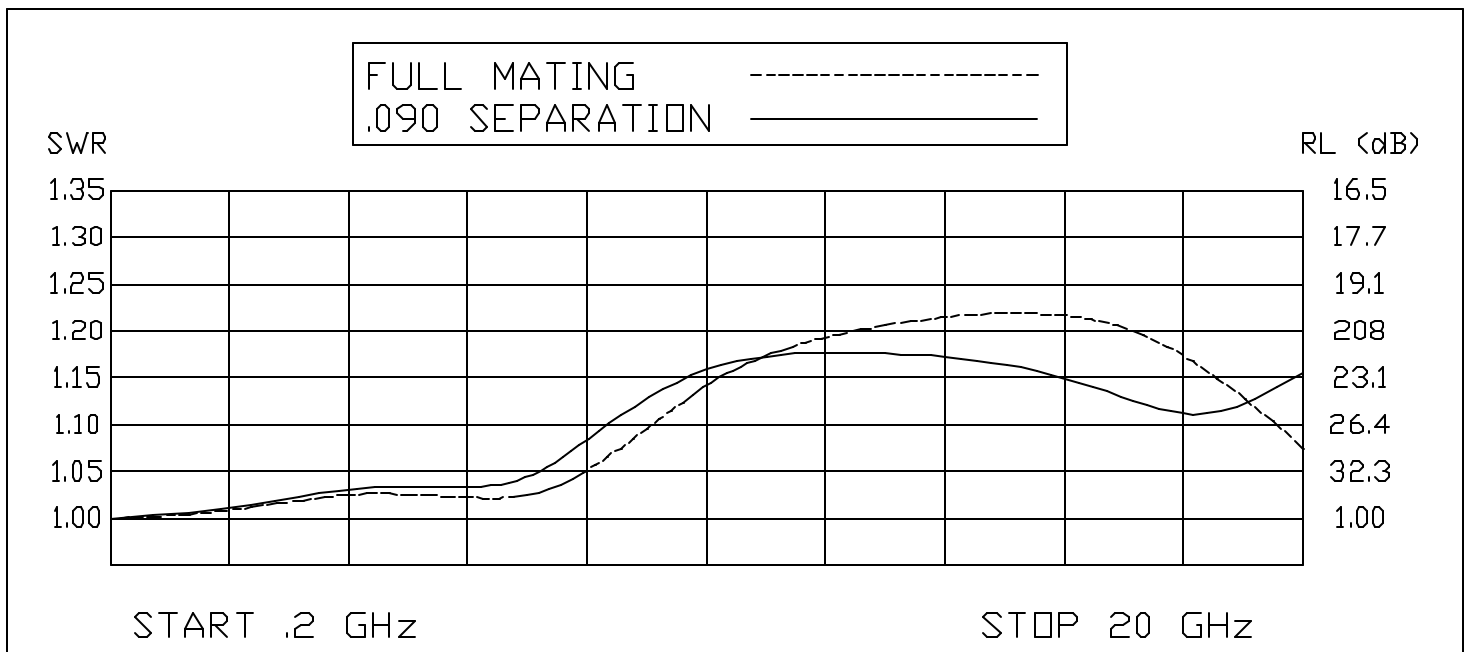
FREQUENCY RANGE: DC TO 32 GHz.
VOLTAGE RATING STRAIGHT: 1000 VRMS.
VOLTAGE RATING ANGLED: 800 VRMS.
CURRENT RATING: 5 AMPS.
INSULATION RESISTANCE: 2000 MEGOHMS MIN.
INSERION LOSS: $.06 \sqrt{f(\text{GHz})}$ dB

CONTACT RESISTANCE: CENTER CONTACT 5 MILLIOHMS
CONTACT RESISTANCE: OUTER CONTACT 3 MILLIOHMS
VSWR: 1.08 + .009(f) GHz., RG-402 CABLE.
1.15 + .02 (f) GHz., RG-174 & RG-316 CABLES.
1.15 + .01 (f) GHz., RG-142, 223, 303 & 400 CABLES.

ENVIRONMENTAL

OPERATING TEMPERATURE: -55°C to +165°C
VIBRATION: MIL-STD-202, METHOD 204, TEST CONDITION D.
SHOCK: MIL-STD-202, METHOD 213, TEST CONDITION I.
SALT SPRAY: MIL-STD-1344, METHOD 1001, CONDITION B.
DURABILITY: 500 CYCLES.

THERMAL SHOCK: MEL-STD-202, METHOD 107, TEST
CONDITION B, EXCEPT HIGH TEMPERATURE SHALL
BE +85°C.
MOISTURE RESISTANCE: MIL-STD-202, METHOD 106.
NO MEASUREMENT AT HIGH HUMIDITY. INSULATION
RESISTANCE 2000 MEGOHMS AFTER HUMIDITY.



INTERFACE DESIGN STANDARD	
IDS-78	
PAGE 2 OF 2	DATE: 06/16/98
DRAWN: JEM	APPROVED: HN

PALEO
CONNECTOR

22 GREAT HILL ROAD, NAUGATUCK, CT. 06770
PHONE: (203) 729-9090 FAX: (203) 723-1794

REV	DESCRIPTION	DATE	APPR
B	PER ECN 5123	06/29/99	HN
C	PER ECN 9935	05/22/09	JEM
D	PER ECN 10145	01/20/10	JEM

DESCRIPTION: 78 SERIES, PKZ[®] SIZE 8, FOR MIL-C-38999

