

NOTES:

1. DESIGN AND INTERFACE PER I. D. S. -78.
2. BULLET, CLAMP NUT & FERRULE SHIPPED LOOSE.
3. ACCOMMODATES M17/133 (.086 SEMI-RIGID) CABLE.

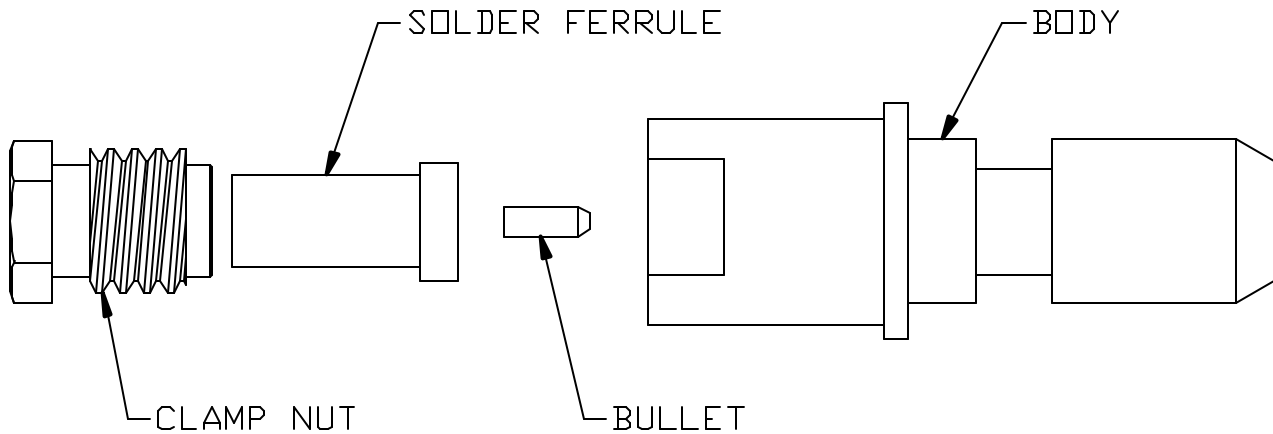
				<p>PALCO CONNECTOR</p> <p>22 GREAT HILL RD., NAUGATUCK, CT 06770</p> <p>UNLESS OTHERWISE SPECIFIED, PALCO WORKMANSHIP STANDARDS APPLY</p> <p>TOLERANCES IN: DECIMALS: XX $\pm .01$.XXX $\pm .005$ ANGLES $\pm 1/2^\circ$ 3ϕ</p> <p>DIMENSIONS IN INCHES OR (METRIC) DO NOT SCALE PRINTS</p>	DRAWN JEM	CHECKED HN	ENGINEER JEM	APPROVED HN	FSCM 58167
D	PER ECN 11018	06/28/11	JEM			DESCRIPTION PKZ PLUG SOLDER/CLAMP			
C	PER ECN 10099	12/3/09	JEM			DATE 08/04/98	DRAWING NO. 78-0030-0860	PLATING OPT. A, B, C, D	
B	PER ECN 6696	08/01/02	HN						
A	PER ECN 4621	08/04/98	HN						
REV.	DESCRIPTION	DATE	APPR.						

CABLE ASSEMBLY PROCEDURE	
P/N	78-0030-0860
PAGE 1 OF 1	DATE: 08/06/98
DRAWN: JEM	APPROVED: HN
FOR USE WITH M17/133 CABLE	

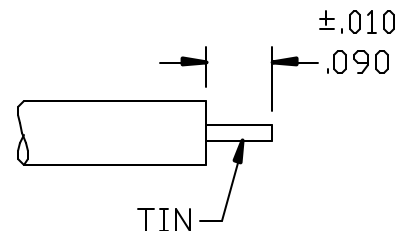
PALEO
CONNECTOR

22 GREAT HILL ROAD, NAUGATUCK, CT. 06770
PHONE: (203) 729-9090 FAX: (203) 723-1794

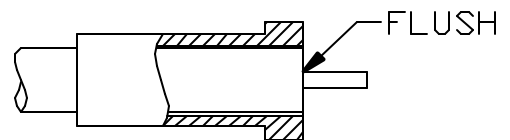
REV	DESCRIPTION	DATE	APPR
A	REL. ECN 4621	08/06/98	HN
B	PER ECN 6696	08/01/02	HN
C	PER ECN 10099	12/3/09	JEM
D	PER ECN 11018	06/28/11	JEM



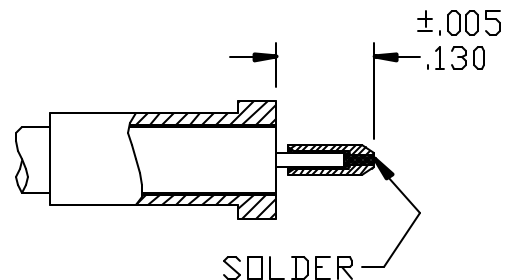
STEP 1
TRIM CABLE TO DIMENSIONS SHOWN.
TIN DIP CENTER CONDUCTOR ONLY.



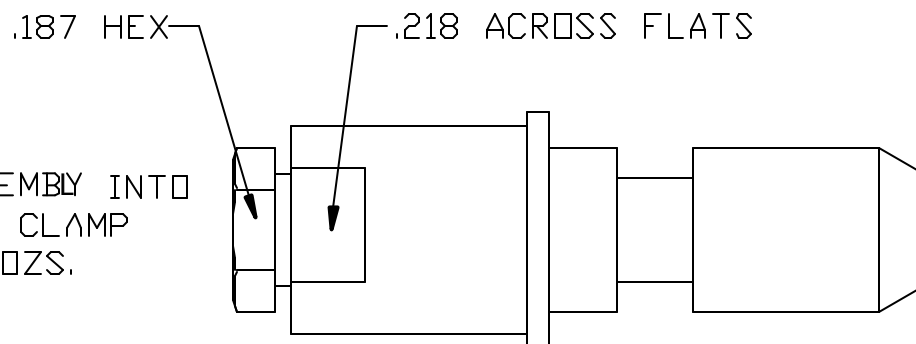
STEP 2
SLIDE CLAMP NUT AND SOLDER FERRULE
ONTO CABLE. SET COUNTERBORE IN
SOLDER FERRULE FLUSH WITH CABLE
AND SOLDER. CLEAN SOLDER JOINT.



STEP 3
SLIDE SPACER AND BULLET OVER CENTER
CONDUCTOR OF CABLE. SOLDER BULLET
TO CABLE. CLEAN SOLDER JOINT.



STEP 4
INSERT CABLE ASSEMBLY INTO
BODY AND TIGHTEN CLAMP
NUT TO 90-100 IN-OZS.



INTERFACE DESIGN STANDARD		PALEO CONNECTOR 22 GREAT HILL ROAD, NAUGATUCK, CT. 06770 PHONE: (203) 729-9090 FAX: (203) 723-1794	REV	DESCRIPTION	DATE	APPR
IDS-78			B	PER ECN 5123	06/29/99	HN
PAGE 1 OF 2	DATE: 06/16/98		C	PER ECN 9935	05/22/09	JEM
DRAWN: JEM	APPROVED: HN		D	PER ECN 10145	01/20/10	JEM

DESCRIPTION: 78 SERIES, SIZE 8 PKZ® , FOR MIL-C-38999

MECHANICAL

MATERIALS
BODIES:
PLUG BODIES - BRASS PER ASTM B 16. INSULATORS - TEFLON (PTFE) PER ASTM D 1457.
RECEPTACLE BODIES - BRASS PER ASTM B 16. RETAINING RING - BERYLLIUM COPPER PER ASTM B 196.
MALE CONTACT - BERYLLIUM COPPER PER ASTM B 197.
FEMALE CONTACTS - BERYLLIUM COPPER PER ASTM B 197.
GROUNDING RING - BERYLLIUM COPPER PER ASTM B 196.

PLATING:
GOLDE PER MIL-G-45204.
COPPER PER MIL-C-14550.
NICKEL PER QQ-N-290.

FINISHES (ADD LETTER TO END OF PART NUMBER)

'A' - .000050 MIN. GOLD OVER NICKEL
'B' - .000030 MIN. GOLD OVER NICKEL
'C' - .000050 MIN. GOLD OVER COPPER
'D' - .000030 MIN. GOLD OVER COPPER

MATING CHARACTERISTICS

OUTER BODIES ————— 3 LBS MAX. INSERTION.
2 OZ. MIN. WITHDRAWL.
CENTER CONTACTS ————— 32 OZ. MAX. INSERTION.
.5 OZ. MIN. WITHDRAWL.
HOUSING RETENTION ————— 12 LBS. MIN.
AXIAL MATING TOLERANCE — .090

ELECTRICALS

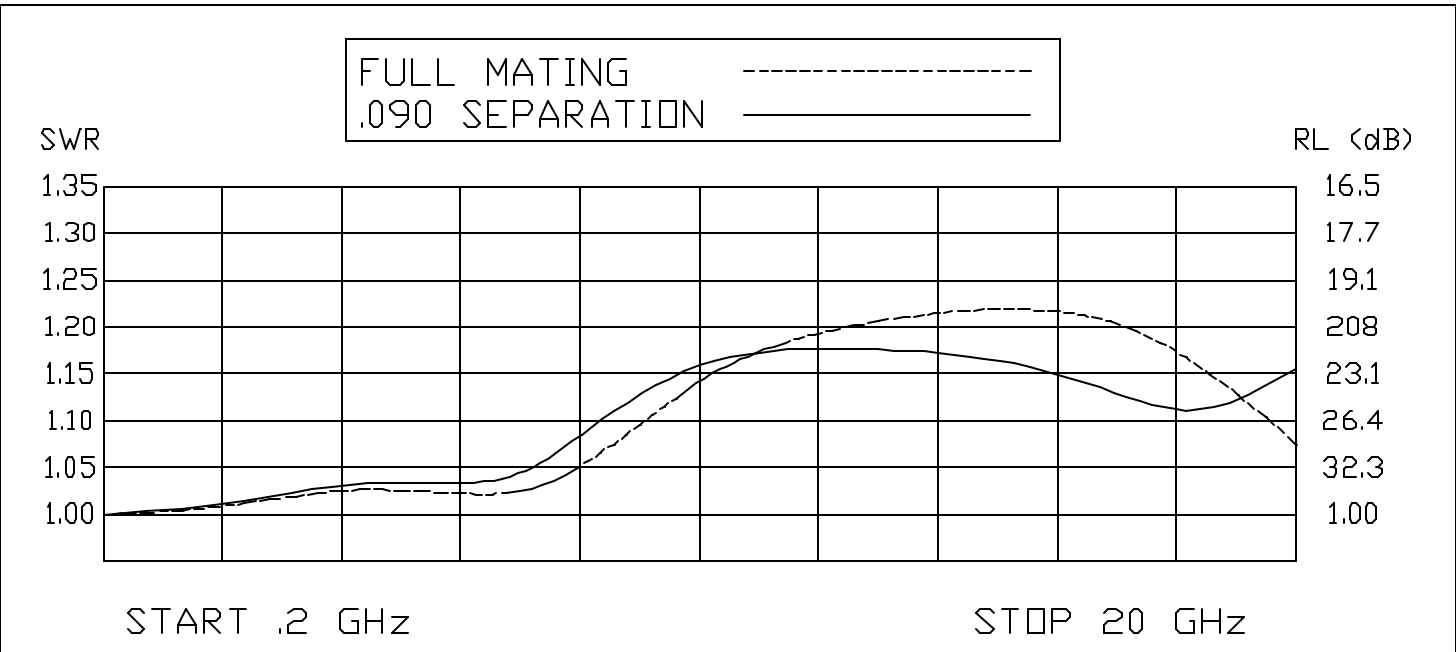
FREQUENCY RANGE: DC TO 32 GHz.
VOLTAGE RATING STRAIGHT: 1000 VRMS.
VOLTAGE RATING ANGLED: 800 VRMS.
CURRENT RATING: 5 AMPS.
INSULATION RESISTANCE: 2000 MEGOHMS MIN.
INSERION LOSS: $.06 \sqrt{f(\text{GHz})}$ dB

CONTACT RESISTANCE: CENTER CONTACT 5 MILLIOHMS
CONTACT RESISTANCE: OUTER CONTACT 3 MILLIOHMS
VSWR: 1.08 + .009(f) GHz., RG-402 CABLE.
1.15 + .02 (f) GHz., RG-174 & RG-316 CABLES.
1.15 + .01 (f) GHz., RG-142, 223, 303 & 400 CABLES.

ENVIRONMENTAL

OPERATING TEMPERATURE: -55°C to +165°C
VIBRATION: MIL-STD-202, METHOD 204, TEST CONDITION D.
SHOCK: MIL-STD-202, METHOD 213, TEST CONDITION I.
SALT SPRAY: MIL-STD-1344, METHOD 1001, CONDITION B.
DURABILITY: 500 CYCLES.

THERMAL SHOCK: MEL-STD-202, METHOD 107, TEST CONDITION B, EXCEPT HIGH TEMPERATURE SHALL BE +85°C.
MOISTURE RESISTANCE: MIL-STD-202, METHOD 106.
NO MEASUREMENT AT HIGH HUMIDITY. INSULATION RESISTANCE 2000 MEGOHMS AFTER HUMIDITY.



INTERFACE DESIGN STANDARD	
IDS-78	
PAGE 2 OF 2	DATE: 06/16/98
DRAWN: JEM	APPROVED: HN

PALEO
CONNECTOR

22 GREAT HILL ROAD, NAUGATUCK, CT. 06770
PHONE: (203) 729-9090 FAX: (203) 723-1794

REV	DESCRIPTION	DATE	APPR
B	PER ECN 5123	06/29/99	HN
C	PER ECN 9935	05/22/09	JEM
D	PER ECN 10145	01/20/10	JEM

DESCRIPTION: 78 SERIES, PKZ[®] SIZE 8, FOR MIL-C-38999

