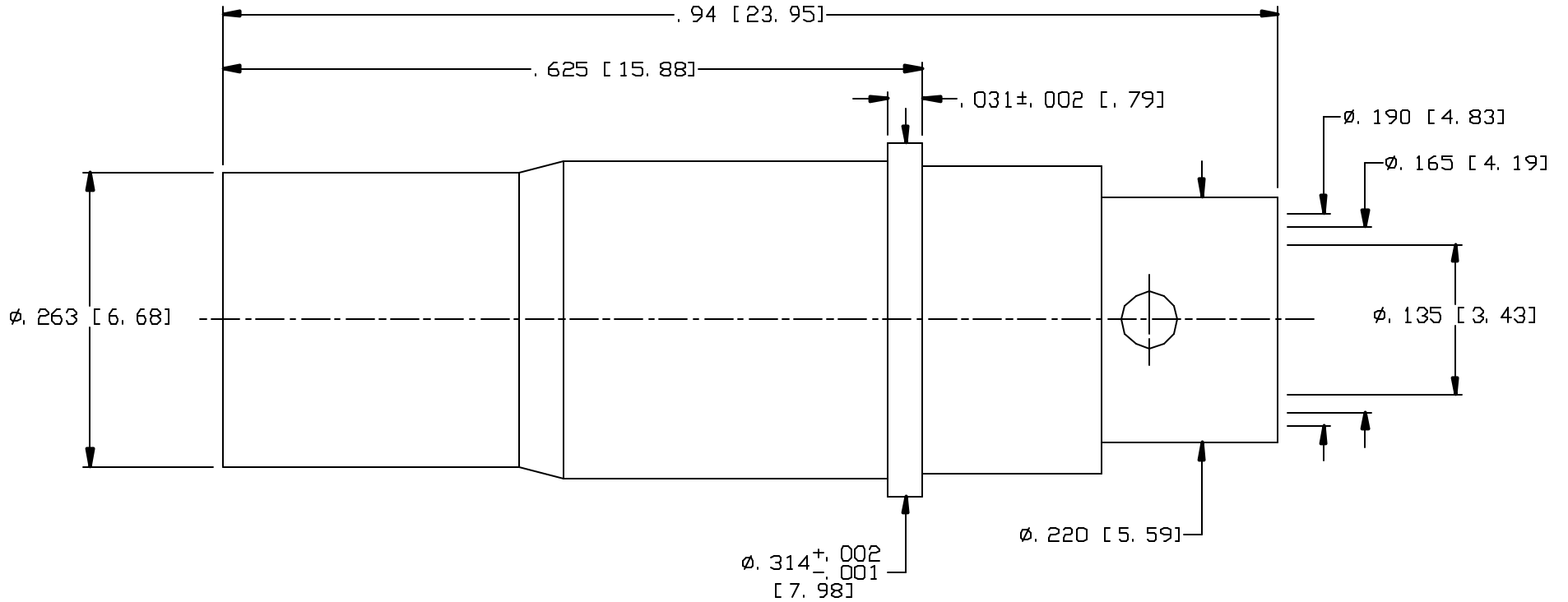


CAD DRAWING - NO MANUAL REVISIONS




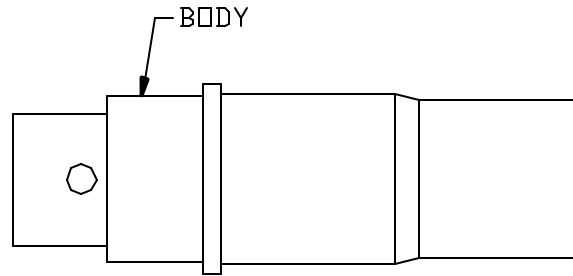
NOTES:

1. DESIGN AND INTERFACE PER I. D. S. -78.
2. DESIGN TO FIT MIL-C-38999, SERIES I, III & IV HOUSING.
3. ACCOMMODATES TIMEES MICROWAVE SFT-142B OR EQUIVALENT CABLE.

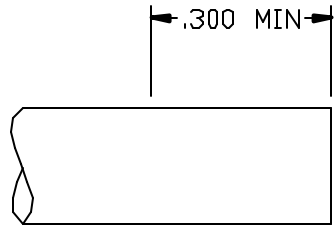
				<p>PALCO CONNECTOR</p> <p>22 GREAT HILL RD., NAUGATUCK, CT 06770</p> <p>UNLESS OTHERWISE SPECIFIED, PALCO WORKMANSHIP STANDARDS APPLY</p> <p>TOLERANCES ON: DECIMALS: XX $\pm .01$.XXX $\pm .005$ ANGLES $\pm 1/2^\circ$ 32°</p> <p>DIMENSIONS IN INCHES OR (METRIC) DO NOT SCALE PRINTS</p>	DRAWN MS	CHECKED JEM	ENGINEER MS	APPROVED JEM	FSCM 58167
						DESCRIPTION PkZ RECEPTACLE DIRECT SOLDER			
						DATE 08/03/10	DRAWING NO. 78-1020-2202	PLATING OPT. A, B, C, D	
REV.	DESCRIPTION	DATE	APPR.		EPR 9832				

THE INFORMATION IN THIS DOCUMENT IS CONFIDENTIAL AND PROPRIETARY AND MAY NOT BE USED FOR ANY PURPOSE WITHOUT THE WRITTEN CONSENT OF PALCO.

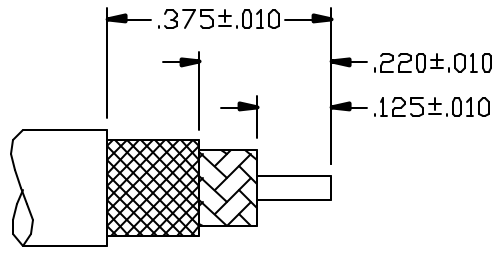
CABLE ASSEMBLY PROCEDURE			REV	DESCRIPTION	DATE	APPR
P/N 78-1020-2202			01	PRELIMINARY	08/03/10	JEM
PAGE 1 OF 1	DATE: 08/03/10					
DRAWN: MS	APPROVED: JEM					
FOR USE WITH TIMES SFT-142B CABLE		22 GREAT HILL ROAD, NAUGATUCK, CT. 06770		PHONE: (203) 729-9090		FAX: (203) 723-1794



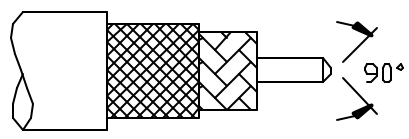
STEP 1
FLUX AND TIN DIP TO DIMENSION SHOWN.



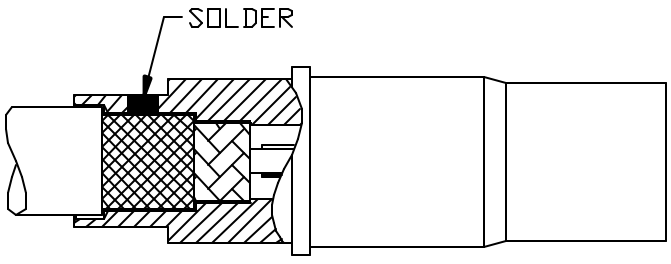
STEP 2
TRIM CABLE TO DIMENSIONS SHOWN




STEP 3
CHAMFER CENTER CONDUCTOR



STEP 4
INSERT CABLE INTO BACK OF BODY AND SOLDER BRAIDS TO CONNECTOR THROUGH SIDE HOLE AND CLEAN SOLDER JOINT.



INTERFACE DESIGN STANDARD			REV	DESCRIPTION	DATE	APPR
IDS-78			B	PER ECN 5123	06/29/99	HN
PAGE 1 OF 2	DATE: 06/16/98		C	PER ECN 9935	05/22/09	JEM
DRAWN: JEM	APPROVED: HN		D	PER ECN 10145	01/20/10	JEM
		22 GREAT HILL ROAD, NAUGATUCK, CT. 06770				
		PHONE: (203) 729-9090 FAX: (203) 723-1794				

DESCRIPTION: 78 SERIES, SIZE 8 PKZ® , FOR MIL-C-38999

MECHANICAL

MATERIALS

BODIES:

PLUG BODIES - BRASS PER ASTM B 16.
RECEPTACLE BODIES - BRASS PER ASTM B 16.

INSULATORS - TEFLON (PTFE) PER ASTM D 1457.
RETAINING RING - BERYLLIUM COPPER PER ASTM B 196.
MALE CONTACT - BERYLLIUM COPPER PER ASTM B 197.
FEMALE CONTACTS - BERYLLIUM COPPER PER ASTM B 197.
GROUNDING RING - BERYLLIUM COPPER PER ASTM B 196.

PLATING:

GOLDE PER MIL-G-45204.
COPPER PER MIL-C-14550.
NICKEL PER QQ-N-290.

FINISHES (ADD LETTER TO END OF PART NUMBER)

"A" - .000050 MIN. GOLD OVER NICKEL
"B" - .000030 MIN. GOLD OVER NICKEL
"C" - .000050 MIN. GOLD OVER COPPER
"D" - .000030 MIN. GOLD OVER COPPER

MATING CHARACTERISTICS

OUTER BODIES _____ 3 LBS MAX. INSERTION.
2 OZ. MIN. WITHDRAWL.
CENTER CONTACTS _____ 32 OZ. MAX. INSERTION.
.5 OZ. MIN. WITHDRAWL.
HOUSING RETENTION _____ 12 LBS. MIN.
AXIAL MATING TOLERANCE _____ .090

ELECTRICALS

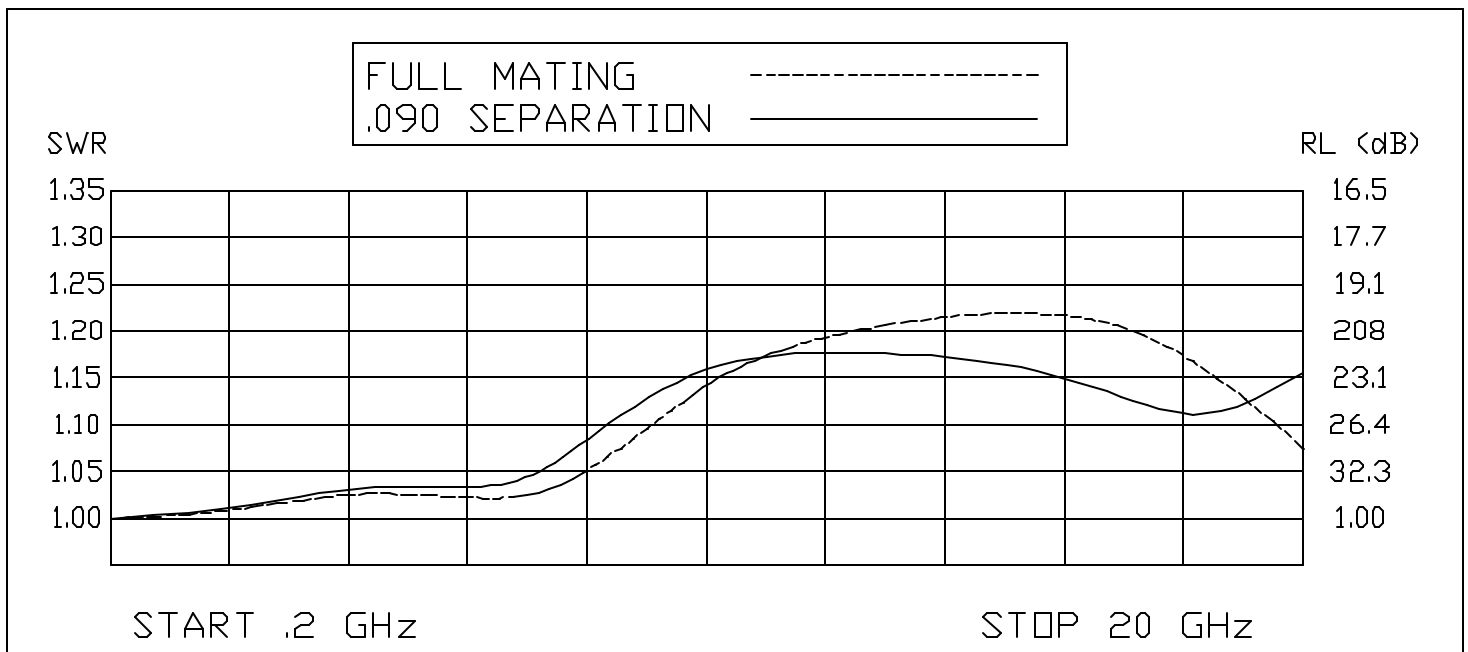
FREQUENCY RANGE: DC TO 32 GHz.
VOLTAGE RATING STRAIGHT: 1000 VRMS.
VOLTAGE RATING ANGLED: 800 VRMS.
CURRENT RATING: 5 AMPS.
INSULATION RESISTANCE: 2000 MEGOHMS MIN.
INSERION LOSS: $.06 \sqrt{f(\text{GHz})}$ dB

CONTACT RESISTANCE: CENTER CONTACT 5 MILLIOHMS
CONTACT RESISTANCE: OUTER CONTACT 3 MILLIOHMS
VSWR: 1.08 + .009(f) GHz., RG-402 CABLE.
1.15 + .02 (f) GHz., RG-174 & RG-316 CABLES.
1.15 + .01 (f) GHz., RG-142, 223, 303 & 400 CABLES.

ENVIRONMENTAL

OPERATING TEMPERATURE: -55°C to +165°C
VIBRATION: MIL-STD-202, METHOD 204, TEST CONDITION D.
SHOCK: MIL-STD-202, METHOD 213, TEST CONDITION I.
SALT SPRAY: MIL-STD-1344, METHOD 1001, CONDITION B.
DURABILITY: 500 CYCLES.

THERMAL SHOCK: MEL-STD-202, METHOD 107, TEST
CONDITION B, EXCEPT HIGH TEMPERATURE SHALL
BE +85°C.
MOISTURE RESISTANCE: MIL-STD-202, METHOD 106.
NO MEASUREMENT AT HIGH HUMIDITY. INSULATION
RESISTANCE 2000 MEGOHMS AFTER HUMIDITY.



INTERFACE DESIGN STANDARD	
IDS-78	
PAGE 2 OF 2	DATE: 06/16/98
DRAWN: JEM	APPROVED: HN

PALEO
CONNECTOR

22 GREAT HILL ROAD, NAUGATUCK, CT. 06770
PHONE: (203) 729-9090 FAX: (203) 723-1794

REV	DESCRIPTION	DATE	APPR
B	PER ECN 5123	06/29/99	HN
C	PER ECN 9935	05/22/09	JEM
D	PER ECN 10145	01/20/10	JEM

DESCRIPTION: 78 SERIES, PKZ[®] SIZE 8, FOR MIL-C-38999

