

INTERFACE DESIGN STANDARD		 22 GREAT HILL ROAD, NAUGATUCK, CT. 06770 PHONE: (203) 729-9090 FAX: (203) 723-1794	REV	DESCRIPTION	DATE	APPR
IDS-33J			A	PER ECN 9251	01/23/08	JEM
PAGE 1 OF 2	DATE: 11/14/07					
DRAWN: YT	APPROVED: JEM					

DESCRIPTION: 33 SERIES, MMCX, PER BS EN 122340 NON-MAGNETIC.

MECHANICAL

MATERIALS

BODIES, MALE CONTACTS, FERRULES AND CAPS - NON-MAGNETIC BRASS.
INSULATORS - TEFLON (PTFE) PER ASTM-D-1710.
FEMALE CONTACTS AND CLIP RING - BERYLLIUM COPPER PER ASTM-B-196.
GASKETS - SILICONE RUBBER PER ZZ-R-765.

FINISHES (ADD LETTER TO END OF PART NUMBER)

GOLD PER MIL-G-45204.
COPPER PER MIL-C-14550.
CONTACTS: - .000030 MIN. GOLD OVER COPPER.
BODIES: - .000020 MIN. GOLD OVER COPPER.
OTHER METAL PARTS:
GOLD PLATED TO MEET THE ENVIRONMENTAL REQUIREMENTS.
RESIDUAL MAGNETISM 20 GAMMA MAX.

MATING CHARACTERISTICS

ENGAGEMENT: 3.5 LBS. MAX.
DISENGAGEMENT: 1.3 TO 3.4 LBS.
DURABILITY: 500 CYCLES.
CONFORMS TO BS EN 122340 STANDARDS.

ELECTRICALS

IMPEDANCE: 50 OHMS.
FREQUENCY RANGE: DC TO 6 GHz.
VOLTAGE RATING: 170 VOLTS RMS.
INSULATION RESISTANCE: 5000 MEGOHMS MIN.
TEMPERATURE RATING: -65°C TO +165°C
DMV: 500 VOLTS RMS.
RF LEAKAGE: 55 dB MIN. @ 1 GHz.
CONTACT RESISTANCE: CENTER CONTACT: 5.0 MILLIOHMS.
OUTER CONTACT: 3.0 MILLIOHMS.
VSWR: 1.20 TYP. FOR STRAIGHT CONNECTORS.
1.30 TYP. FOR RIGHT ANGLE CONNECTORS.
INSERTION LOSS: 0.2 dB MAX./1 GHz.

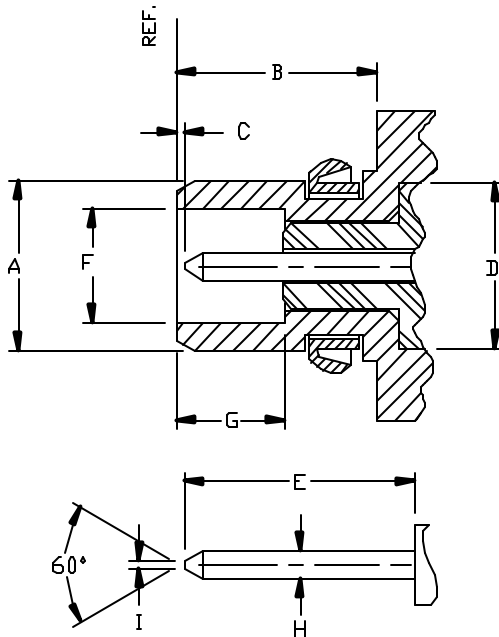
ENVIRONMENTAL

VIBRATION: MIL-STD-202, METHOD 204, TEST CONDITION D.
SHOCK: MIL-STD-202, METHOD 213, TEST CONDITION A.
THERMAL SHOCK: MIL-STD-202, METHOD 107, TEST CONDITION C.
CORROSION: MIL-STD-202, METHOD 101, TEST CONDITION B.

DESCRIPTION: 33 SERIES, MMCX, PER BS EN 122340 NON-MAGNETIC.

PLUG

	MIN.	MAX.
A	—	∅.094
B	.106	—
C	.000	.010
D	∅.091	∅.093
E	—	.124
F	∅.062	∅.064
G	.057	—
H	∅.015	∅.017
I	—	∅.008



JACK

	MIN.	MAX.
A	∅.095	—
B	.102	—
C	.035	.047
D	∅.091	∅.093
E	.055	—
F	∅.118	∅.120
G	∅.113	∅.114
H	.062	.064
I	.091	.092
K	—	.009

