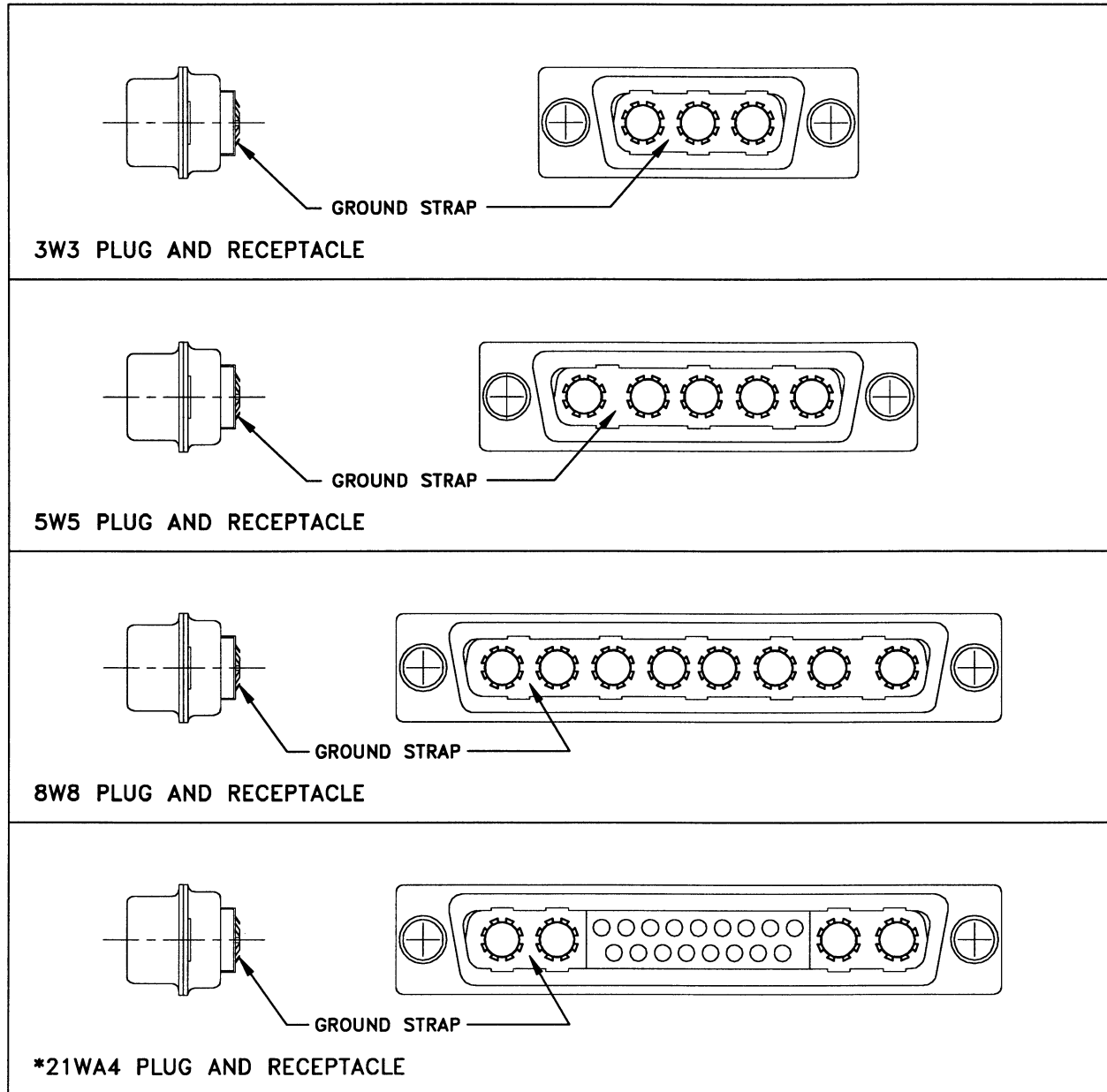


GROUNDING STRAPS

To select a ground strap for these combination connectors shown, use Hardware Modifier R.

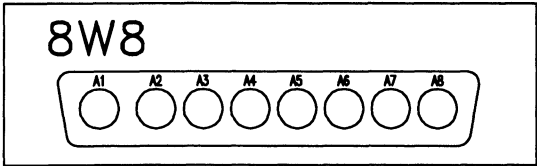
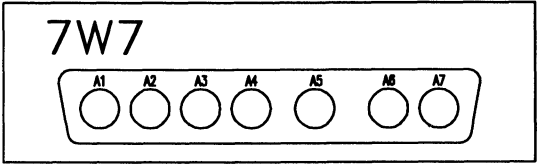
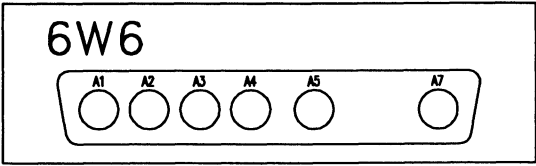
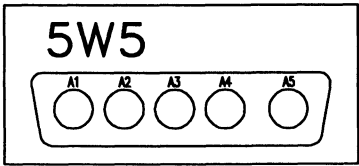
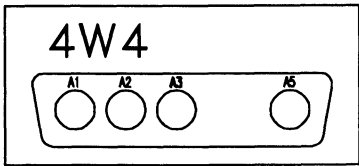
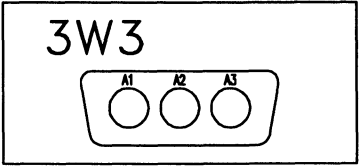
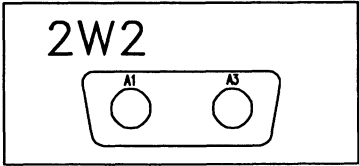


*Consult factory for other options and availability.



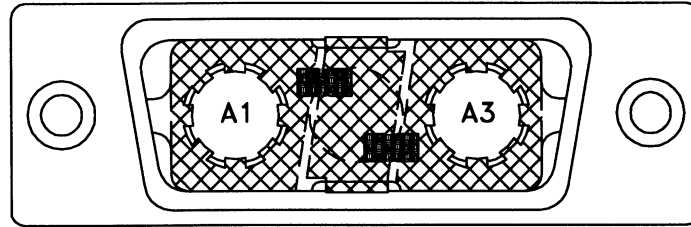
EMI/RFI BARRIER PLATING

To enhance EMI/RFI protection, a special manufacturing plating process can be selected for treating size 8 connector insulators on 2W2 through 8W8 configurations. To choose this insulator option, select series prefix "E" when specifying your part number.

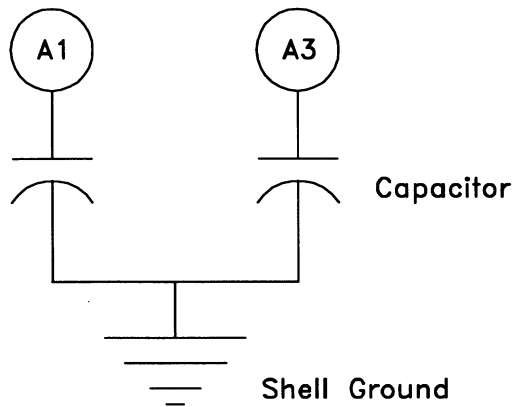


CAPACITIVELY DECOUPLED CAPABILITIES

A capability for reducing signal noise on size 8 coax and power contacts is available through the use of capacitively decoupled combination connectors. An electrical path is established between the D-subminiature shell and any coax or high power contact which shunts high frequency noise to ground while blocking the DC path. An example of a 2 position combination connector with both size 8 contacts decoupled is shown below. Application engineering is available for unique requirements.



A Size, 2 Position Combination Connector



Both Size 8 Contacts Decoupled

Filtering of combination connectors is available for commercial applications requiring protection against EMI and RFI. Our technical staff can assist in matching your filter requirements in signal and or power and RF contacts.

