

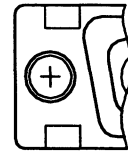
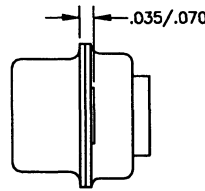
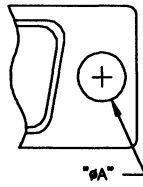
HARDWARE OPTIONS

INCLUDES: THROUGH HOLE

NOTES:

RIVET SHELL SHOWN. REFER TO SHELL DIMENSION PAGE FOR DIMENSIONS OF TAB AND RIVET SHELL.

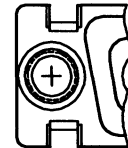
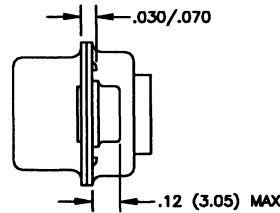
MODIFIER	A DIMENSION	SECURING METHOD
BLANK	.120 (3.05)	RIVET
A	.165 (4.19)	TAB



INCLUDES: #4-40 CLINCH NUT

MATERIAL: Low Carbon Steel
FINISH: Yellow Chromate over Zinc

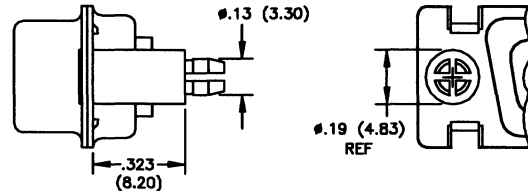
MODIFIER
B



INCLUDES: #4-40 SWAGED STANDOFF FASTENER

MATERIAL: Phosphor Bronze
FINISH: Nickel Plating

MODIFIER
C

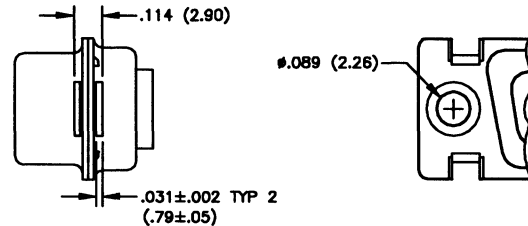


RECOMMEND .120 (3.05) PLATED THRU HOLE FOR PRINTED CIRCUIT BOARD

INCLUDES: DUAL FLOAT MOUNT WASHER

MATERIAL: Cold Rolled Steel
FINISH: Yellow Chromate over Zinc

MODIFIER
D



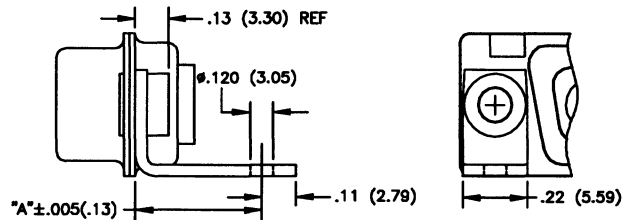
.032 (.81) Diametrical Float

INCLUDES: #4-40 STANDOFF

MATERIAL: Brass Alloy
FINISH: Yellow Chromate over Zinc

RIGHT ANGLE BRACKET
MATERIAL: Cold Rolled Steel
FINISH: Yellow Chromate over Zinc

MODIFIER	A DIMENSION
E	.420 (10.67)
F	.395 (10.03)*
F	.340 (8.64)



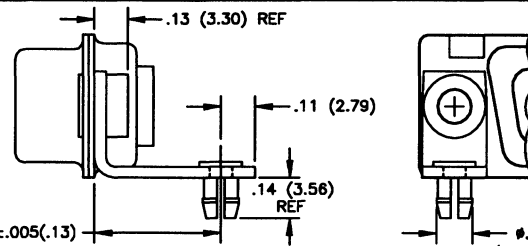
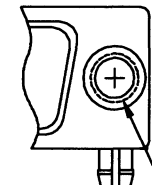
*FOR 'D' SIZE SHELL ONLY

INCLUDES: #4-40 STANDOFF

MATERIAL: Brass Alloy
FINISH: Yellow Chromate over Zinc

RIGHT ANGLE BRACKET &
PUSH-ON FASTENER
MATERIAL: Cold Rolled Steel
FINISH: Yellow Chromate over Zinc

MODIFIER	A DIMENSION
G	.420 (10.67)
H	.395 (10.03)*
H	.340 (8.64)



*FOR 'D' SIZE SHELL ONLY

RECOMMEND .120 (3.05) PLATED THRU HOLE FOR PRINTED CIRCUIT BOARD

UNLESS OTHERWISE SPECIFIED DIMENSIONS ARE IN INCHES (mm) TOLERANCES ARE: .XX±.01 .XXX±.005 REF-REFERENCE DIMENSIONS, NO TOLERANCE APPLIES



THE PHOENIX COMPANY
of CHICAGO, INC.

Dimensions are subject to change without notice.

555 Pond Drive • Wood Dale, IL 60191-1192 • Toll Free (800)323-9562

HARDWARE OPTIONS

INCLUDES: INTERNAL D-SUB GUIDE PIN
 MATERIAL: Stainless Steel
 FINISH: Passivate
 #4-40 SWAGED STANDOFF FASTENER
 MATERIAL: Phosphor Bronze
 FINISH: Nickel Plating

MODIFIER
J

RECOMMEND .120 (3.05) PLATED THRU HOLE FOR PRINTED CIRCUIT BOARD

INCLUDES: INTERNAL D-SUB GUIDE BUSHING
 MATERIAL: Brass Alloy or Steel
 FINISH: Yellow Chromate over Zinc
 RIGHT ANGLE BRACKET
 MATERIAL: Cold Rolled Steel
 FINISH: Yellow Chromate over Zinc

MODIFIER	A DIMENSION
K	.420 (10.67)
	.395 (10.03)*
L	.340 (8.64)

RECOMMEND .120 (3.05) PLATED THRU HOLE FOR PRINTED CIRCUIT BOARD *FOR 'D' SIZE SHELL ONLY

INCLUDES: INTERNAL D-SUB GUIDE BUSHING
 MATERIAL: Brass Alloy or Steel
 FINISH: Yellow Chromate over Zinc
 RIGHT ANGLE BRACKET &
 PUSH-ON FASTENER
 MATERIAL: Cold Rolled Steel
 FINISH: Yellow Chromate over Zinc

MODIFIER	A DIMENSION
M	.420 (10.67)
	.395 (10.03)*
N	.340 (8.64)

RECOMMEND .120 (3.05) PLATED THRU HOLE FOR PRINTED CIRCUIT BOARD *FOR 'D' SIZE SHELL ONLY

INCLUDES: SCREW LOCK KIT PLUG (SCREW AND RETAINER)
 MATERIAL: Cold Rolled Steel
 FINISH: Yellow Chromate over Zinc

Note:
 May be ordered separately under part # P205980-1

MODIFIER
P

INCLUDES: SCREW LOCK KIT RECEPTACLE
 MATERIAL: Cold Drawn Steel
 FINISH: Yellow Chromate over Zinc

Note:
 May be ordered separately under part # P20418-2

MODIFIER
Q

GROUND STRAPS—REFER TO SUCCEEDING PAGES

MODIFIER
R

GUIDE PIN PLATES—REFER TO SUCCEEDING PAGES

MODIFIER	PLATE
S	STANDARD
T	REVERSED

UNLESS OTHERWISE SPECIFIED DIMENSIONS ARE IN INCHES (mm) TOLERANCES ARE: .XX±.01 .XXX±.005 REF—REFERENCE DIMENSIONS, NO TOLERANCE APPLIES

