

PART NUMBER EXAMPLE

Description of D-Sub Requirement

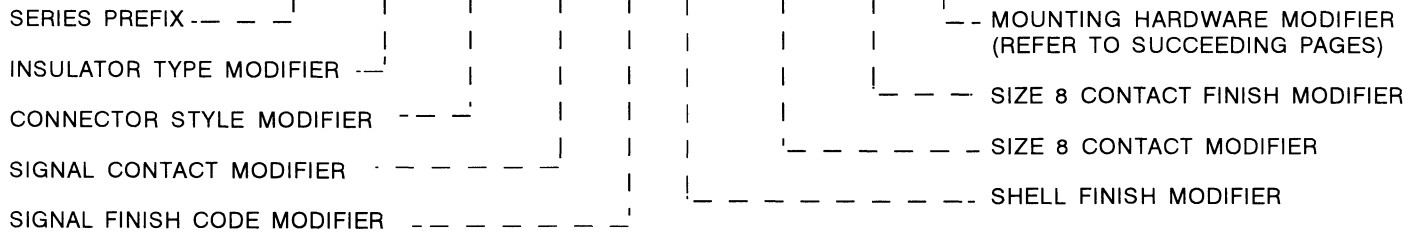
Connectors with a 13W3 insulator configuration are required. The connectors are to have right angle female (socket) signal contacts and 75 ohm right angle stamped and formed size 8 contacts. These connectors will ultimately be mounted on .125 inch thick PC boards with board locks (push-ons) attached to right angle brackets. The finish on the signal contacts and the size 8 contacts is to be 30 microinches of gold over nickel. Shell finish is to be yellow chromate over zinc.

Requirement

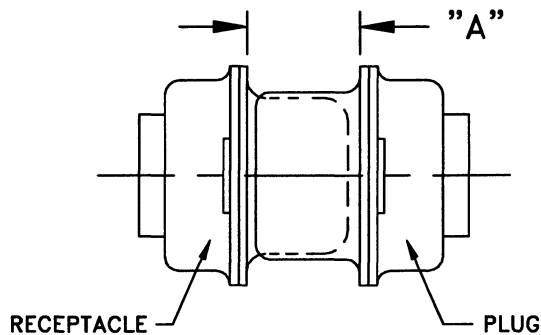
Digit By Digit Part Number Creation

- | | | |
|---|----------|---|
| <ul style="list-style-type: none"> ■ Standard Series Connector ■ 13W3 Insulator ■ Receptacle (Socket Signal Contacts) ■ Right Angle Signal Contacts for .125 thick PC Board ■ Standard .000030 Gold over Nickel on Signal Contacts ■ Standard Yellow Chromate over Zinc on Shell ■ Right Angle PC Receptacles, PKZ ■ Standard Plating .000030 Gold over copper ■ #4-40 Standoffs with Right Angle Brackets & Push-On Fasteners | <p>→</p> | <p>SERIES PREFIX: P</p> <p>INSULATOR TYPE MODIFIER: 133</p> <p>CONNECTOR STYLE MODIFIER: R</p> <p>SIGNAL CONTACT MODIFIER: G</p> <p>SIGNAL FINISH CODE MODIFIER: BLANK</p> <p>SHELL FINISH MODIFIER: 1</p> <p>SIZE 8 CONTACT MODIFIER: 6B</p> <p>SIZE 8 CONTACT FINISH MODIFIER: D</p> <p>MOUNTING HARDWARE MODIFIER: G</p> |
|---|----------|---|

P
133
R
G
1
6
B
D
G
= P133RG16BDG



MATING INTERFACE



Shell Size	"A" Dimension
E,A	$.265 \pm .015$
B,C,D	$.256 \pm .015$

